

LALIQUE

South Kensington
9 February 2016



CHRISTIE'S



SPECIALISTS FOR THIS AUCTION

Joy McCall
Senior Specialist/Director
+44 (0)20 7752 3237

Raffaella Goffredi
Associate Specialist
+44 (0)20 7752 3015

Nicholas Challinor-Halford
Senior Administrator
Tel:+44 (0)20 7752 3382

Front cover: Lot 45
Back cover: Lot 45, 36 and 8
Inside front cover: Lot 115 (detail)
Page 2: Lot 24 (detail)
Inside back cover: Lot 18 (detail)

EMAIL

First initial followed by
last name @christies.com
(eg. Joy McCall = jmccall@christies.com.)
For general enquiries about this auction,
email should be addressed to Nicholas
Challinor-Halford, nchallinorhalford@
christies.com.

INTERNATIONAL DEPARTMENT DESIGN

DEPUTY CHAIRMAN
Philippe Garner
Tel: +44 (0)20 7389 2366

INTERNATIONAL HEAD
Sonja Ganne
Tel: +33 (0)1 40 76 86 21

**INTERNATIONAL
SPECIALIST**
Simon Andrews
Tel: +44 (0)20 7752 3380

WORLDWIDE

LONDON
Jeremy Morrison
Simon Andrews
Joy McCall
Fiona Baker
Raffaella Goffredi
Xavier Brunswick

NEW YORK

Carina Villinger –
Head of Department
Carolyn Pastel
Vanessa Booher

PARIS
Sonja Ganne
Pauline De Smedt –
Head of Department
Emmanuelle Karsenti
Flavien Gaillard

**INTERNATIONAL HEAD OF
GROUP**
Cathy Elkie
Tel: +1 212 636 2901

**INTERNATIONAL
MANAGING DIRECTOR**
Keren Gottesman
Tel: +1 212 492 5483

**EUROPEAN BUSINESS
DIRECTOR**
Lucy Brown
Tel: +44 (0)20 7752 3167

**BUSINESS MANAGER
UNITED KINGDOM**
Eva French
Tel +44 (0)20 7389 2334

AMERICAS
Alison Curry
Tel +1 212 641 3182

PARIS
Virginie Barocas-Hagelaur
Tel: +33 (0)1 40 76 85 63

BUSINESS COORDINATOR

AMERICAS
Caroline Strumph
Tel +1 212 641 5760

16/12/15

PRIVATE SALES

Christie's offers clients the ability to buy or sell through Private Sales.
For additional information, please contact the department specialists at +44 (0)20 7752 3236.

INTERNATIONAL AUCTION CALENDAR DESIGN

TO INCLUDE YOUR PROPERTY IN THESE SALES PLEASE CONTACT THE SPECIALISTS ABOVE
OR A REPRESENTATIVE OFFICE FOR FURTHER INFORMATION.

LONDON

24 FEBRUARY 2016
**QUEEN ANNE'S GATE:
WORKS FROM THE ART
COLLECTION OF STING &
TRUDIE STYLER**
KING STREET

26 OCTOBER 2016
HISTORICAL DESIGN
KING STREET

26 OCTOBER 2016
DESIGN
KING STREET

16 NOVEMBER 2016
LALIQUE
SOUTH KENSINGTON

PARIS

24 MAY 2016
DESIGN EVENING SALE
PARIS

25 MAY 2016
DESIGN DAY SALE
PARIS

NEW YORK

22 MARCH 2016
DESIGN
NEW YORK

23 MARCH 2016
**FRENCH ART GLASS: AN
IMPORTANT NEW YORK
PRIVATE COLLECTION**
NEW YORK

9 JUNE 2016
DESIGN
NEW YORK



Shot on location at **LALIQUE**, 47 Conduit Street, London W1S 2YP.
Christie's would like to thank Lalique for making this possible.

Subject to change.
14/12/15



LALIQUE

9 FEBRUARY 2016

AUCTION

Tuesday 9 February 2016
at 2.00 pm Lots 1-120
85 Old Brompton Road
London SW7 3LD

AUCTION CODE AND NUMBER

In sending absentee bids or
making enquiries, this sale
should be referred to as
KALEIDOSCOPE-12285

VIEWING

Saturday	6 February	11.00 am - 5.00 pm
Sunday	7 February	11.00 am - 5.00 pm
Monday	8 February	9.00 am - 7.30 pm
Tuesday	9 February	9.00 am - 12.00 noon

AUCTIONEER

Jeremy Morrison

SERVICES

ABSENTEE BIDS

Tel: +44 (0)20 7752 3225
Fax: +44 (0)20 7581 1403

AUCTION RESULTS

Tel: +44 (0)20 7839 9060
christies.com

TELEPHONE BIDS

Tel: +44 (0)20 7752 3225
Fax: +44 (0)20 7591 0987

CLIENT LIAISON

Aina Truyols
Tel: +44 (0)20 7752 3179

CLIENT SERVICES

Tel: +44 (0)20 7839 9060
Fax: +44 (0)20 7389 2869
Email: info@christies.com

STORAGE AND COLLECTION

Please refer to the important
notice on page 85. Please note that
Cadogan Tate's opening hours are
Monday to Friday 9am to 5pm,
and purchases transferred to their
warehouse are not available for
collection at weekends.

SHIPPING

Tel: +44 (0)20 7389 2712
Fax: +44 (0)20 7389 2869

STORAGE AND COLLECTION

Tel: +44 (0)20 7839 9060
Fax: +44 (0)20 7389 2869

CONDITIONS OF SALE

This auction is subject to
Important Notices,
Conditions of Sale and to Reserves

BUYING AT CHRISTIE'S

For an overview of the process, see the
Buying at Christie's section.

[14]

christies.com



Browse this auction and view real-
time results on your iPhone, iPod
Touch, iPad and Android

These auctions feature

CHRISTIE'S LIVE
Bid live in Christie's salerooms worldwide
register at christies.com

CHRISTIE'S

View catalogues and leave bids online
at christies.com

PROPERTY FROM A PRIVATE COLLECTION
LOTS 1-45

A focussed and passionate search for vases by René Lalique began after having seen a *Formose* vase in jade green whilst surfing the internet and led to the construction of this outstanding collection over a ten year period. The jewel-like colours were beguiling, as was the range of subject matters inspired by nature. All the vases in the collection are of a similar scale and formed a breath-taking display.

1
AN ANTILOPES VASE, NO. 875
designed 1925, clear, frosted and black
enamelled

10¾ in. (27.2 cm.) high
stencilled R. LALIQUE FRANCE

£3,000-5,000

\$4,700-7,800
€4,200-6,900



2

A LEZARDS ET BLUETS VASE, NO. 879

designed 1913, black and white stained

13½ in. (34.2 cm.) high

moulded *R. LALIQUE*

£12,000-18,000

\$19,000-28,000

€17,000-25,000





3
A MARISA VASE, NO. 1002
designed 1927, cased opalescent and blue
stained
9 in. (22.8 cm.) high
engraved *R. Lalique France*
£2,000-3,000 \$3,200-4,700
 €2,800-4,100



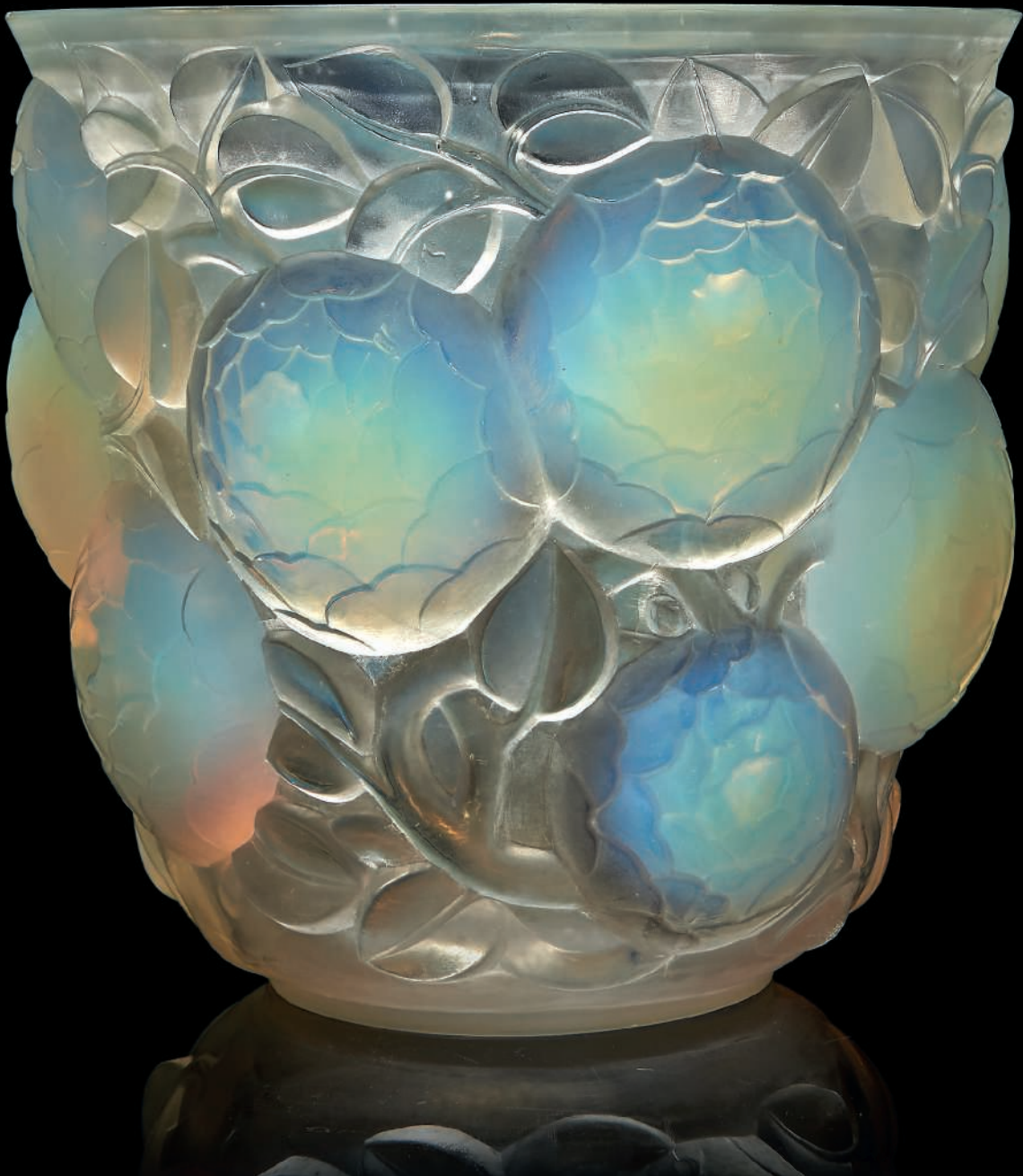
4
AN ARCHERS VASE, NO. 893
designed 1921, cased opalescent and blue
stained
10 $\frac{3}{4}$ in. (27.4 cm.) high
engraved *R. Lalique France No. 893*
£4,000-6,000 \$6,300-9,400
 €5,600-8,300

5
AN ORAN VASE, NO. 999
designed 1927, opalescent

10¼ in. (26.2 cm.) high
later wheel-engraved *R. LALIQUE FRANCE*,
engraved *No. 999* (polishing)

£10,000-15,000

\$16,000-23,000
€14,000-21,000





6

AN ARCHERS VASE, NO. 893

designed 1921, cased butterscotch and sepia stained

10½ in. (26.5 cm.) high

moulded R. LALIQUE, engraved *Lalique*

£6,000-8,000

\$9,400-12,000

€8,300-11,000



7

AN ARCHERS VASE, NO. 893

designed 1921, amber and white stained

10½ in. (26.5 cm.) high

engraved R. Lalique France No. 893

£4,000-6,000

\$6,300-9,400

€5,600-8,300

8

AN ARCHERS VASE, NO. 893

designed 1921, electric blue and white
stained

10½ in. (27 cm.) high
intaglio R. LALIQUE, engraved France

£15,000-25,000

\$24,000-39,000

€21,000-34,000



9

A PERRUCHES VASE, NO. 876

designed 1919, teal green and white stained

10 in. (25.5 cm.) high

moulded *R. LALIQUE*, engraved *R. Lalique*

£15,000-25,000

\$24,000-39,000

€21,000-34,000



10

A PERRUCHES VASE, NO. 876

designed 1919, lime green and white stained

10 in. (25.5 cm.) high

moulded *R. LALIQUE*, engraved *R. Lalique*

£10,000-15,000

\$16,000-23,000

€14,000-21,000





11

A MILAN VASE, NO. 1025

designed 1929, sapphire blue and white stained

11 in. (28 cm.) high
stencilled *R. LALIQUE*, engraved *France*

£8,000-12,000

\$13,000-19,000
€12,000-17,000



12

A MILAN VASE, NO. 1025

designed 1929, amber and white stained

11 in. (28 cm.) high
stencilled *R. LALIQUE*

£7,000-9,000

\$11,000-14,000
€9,700-12,000



13

A MILAN VASE, NO. 1025

designed 1929, green and white stained

11 in. (28 cm.) high
engraved *R. Lalique, France, No. 1025*

£5,000-7,000

\$7,900-11,000
€6,900-9,600

14

A PERRUCHES VASE, NO. 876

designed 1919, amber and white stained

10 in. (25.5 cm.) high

wheel-engraved *R. LALIQUE*

£10,000-15,000

\$16,000-23,000

€14,000-21,000



15

A PERRUCHES VASE, NO. 876

designed 1919, blue and white stained

10 in. (25.5 cm.) high

engraved *Lalique*, moulded *LALIQUE*

£10,000-15,000

\$16,000-23,000

€14,000-21,000



16

A PERRUCHES VASE, NO. 876

designed 1919, cased red and white stained

10 in. (25.5 cm.) high

engraved *R. Lalique France No. 876*

£12,000-18,000

\$19,000-28,000

€17,000-25,000



19

A PERRUCHES VASE, NO. 876

designed 1919, emerald green and white
stained

10 in. (25.5 cm.) high
engraved *R. Lalique*, moulded *Lalique*

£12,000-18,000

\$19,000-28,000

€17,000-25,000





20

AN ARAS VASE, NO. 919

designed 1924, teal green and white stained

9½ in. (24.2 cm.) high

intaglio R. LALIQUE, later engraved France

£5,000-7,000

\$7,900-11,000

€6,900-9,600



21

AN ARAS VASE, NO. 919

designed 1924, deep amber and white stained

9½ in. (24.2 cm.) high

intaglio R. LALIQUE, later engraved France

£7,000-9,000

\$11,000-14,000

€9,700-12,000

22

A PERRUCHES VASE, NO. 876

designed 1919, cased yellow

10 in. (25.5 cm.) high

moulded *R. LALIQUE*, engraved *R. Lalique*

£15,000-25,000

\$24,000-39,000

€21,000-34,000



23

A PERRUCHES VASE, NO. 876

designed 1919, cased jade green and white
stained

10 in. (25.5 cm.) high
engraved *R. Lalique France No. 876*,
moulded *R. LALIQUE*

£15,000-25,000

\$24,000-39,000

€21,000-34,000



24

AN ALICANTE VASE, NO. 998

designed 1927, double cased jade

10¼ in. (27.3 cm.) high
engraved *R. Lalique France*

£20,000-30,000

\$32,000-47,000

€28,000-41,000





25

AN ARAS VASE, NO. 919

designed 1924, cased jade and white stained

9½ in. (24.2 cm.) high

engraved *R. Lalique France No. 919*

£8,000-12,000

\$13,000-19,000

€12,000-17,000



26

A POISSONS VASE, NO. 925

designed 1921, cased jade

9½ in. (24.2 cm.) high

moulded *R. LALIQUE*, engraved *R. Lalique France No. 925* (restored)

£5,000-7,000

\$7,900-11,000

€6,900-9,600

27

A GROS SCARABEES VASE, NO. 892

designed 1932, double cased jade and white stained

11¾ in. (30 cm.) high

engraved *R. Lalique France No. 892*

£35,000-45,000

\$55,000-70,000

€49,000-62,000



28

A SERPENT VASE, NO. 896

designed 1924, deep amber

10 in. (25.4 cm.) high

intaglio R. LALIQUE

£15,000-25,000

\$24,000-39,000

€21,000-34,000



29

A GROS SCARABEES VASE, NO. 892

designed 1932, deep amber

11¼ in. (30 cm.) high

moulded *R. LALIQUE* (slight polishing)

£12,000-18,000

\$19,000-28,000

€17,000-25,000





30

A BISKRA VASE, NO. 1078

designed 1932, sapphire blue and white stained

11½ in. (29.2 cm.) high
stencilled R. LALIQUE FRANCE

£2,000-3,000

\$3,200-4,700
€2,800-4,100



31

A BISKRA VASE, NO. 1078

designed 1932, amber

11½ in. (29.2 cm.) high
stencilled R. LALIQUE FRANCE

£3,000-5,000

\$4,700-7,800
€4,200-6,900

32

A SAUTERELLES VASE, NO. 888

designed 1912, electric blue and white
stained

11¼ in. (28.7 cm.) high
engraved *R. Lalique*, engraved *Lalique*

£10,000-15,000

\$16,000-23,000

€14,000-21,000



33

A PIERREFONDS VASE, NO. 990

designed 1926, amber

6½ in. (15.5 cm.) high; 13½ in. (34.2 cm.) wide
wheel-engraved *R. LALIQUE FRANCE*,
engraved *No. 990*

£6,000-8,000

\$9,400-12,000

€8,300-11,000



34

A SAUTERELLES VASE, NO. 888

designed 1912, emerald green and white
stained

11½ in. (29.3 cm.) high

engraved *R. Lalique France No. 888*

£8,000-12,000

\$13,000-19,000

€12,000-17,000



35

A TORTUES VASE, NO. 966

designed 1926, clear, frosted and sepia stained

11 in. (28 cm.) high
intaglio R. *LALIQUE*

£8,000-12,000

\$13,000-19,000
€12,000-17,000



36

A TORTUES VASE, NO. 966

designed 1926, deep amber and white
stained

10¼ in. (27.2 cm.) high
intaglio R. *LALIQUE*

£15,000-25,000

\$24,000-39,000
€21,000-34,000



37

A POISSONS VASE, NO. 925

designed 1921, lime green and white stained

9¾ in. (25 cm.) high

moulded *R. LALIQUE*, later engraved *France*
(tiny nicks)

£6,000-8,000

\$9,400-12,000

€8,300-11,000



38

A POISSONS VASE, NO. 925

designed 1921, burgundy and white stained

9½ in. (24.2 cm.) high

moulded R. LALIQUE, engraved *Lalique*

£12,000-18,000

\$19,000-28,000

€17,000-25,000



39

A POISSONS VASE, NO. 925

designed 1925, cased orange-amber and
white stained

9½ in. (24.2 cm.) high

engraved *R. Lalique France No. 925*

£12,000-18,000

\$19,000-28,000

€17,000-25,000



40

A POISSONS VASE, NO. 925

designed 1921, electric blue

9½ in. (24.2 cm.) high
intaglio R. LALIQUE

£25,000-30,000

\$40,000-47,000

€35,000-41,000





41

A POISSONS VASE, NO. 925

designed 1921, double cased red

9½ in. (24.2 cm.) high

moulded *R. LALIQUE*, engraved *R. Lalique*
France (restored)

£5,000-7,000

\$7,900-11,000

€6,900-9,600



42

A POISSONS VASE, NO. 925

designed 1921, emerald green

9½ in. (24.2 cm.) high

moulded *R. LALIQUE* (polishing to top rim)

£3,000-5,000

\$4,700-7,800

€4,200-6,900

43

A LANGUEDOC VASE, NO. 1021

designed 1929, green

9 in. (22.8 cm.) high

engraved *R. Lalique France* (tiny bruises)

£15,000-25,000

\$24,000-39,000

€21,000-34,000



44

A SOPHORA VASE, NO. 977

designed 1926, deep amber and white
stained

10½ in. (26.7 cm.) high
intaglio R. LALIQUE

£8,000-12,000

\$13,000-19,000
€12,000-17,000



45

A PENTHIEVRE VASE, NO. 1011

designed 1928, deep amber and white
stained

10¼ in. (26.2 cm.) high
stencilled *R. LALIQUE FRANCE*

£20,000-30,000

\$32,000-47,000

€28,000-41,000





VARIOUS PROPERTIES

46

A BOUQUETS MARGUERITES
CIRE PERDUE VASE

early 20th Century, blue stained

2¾ in. (6 cm.) high; 5½ in. (14cm.) diameter
wheel-engraved *LALIQUE*

£20,000-30,000

\$32,000-47,000
€28,000-41,000

This previously unknown vase maybe No. 549 designed in 1929 and listed in F. Marilhac, *René Lalique 1860-1945 Maître-Verrier, Paris, 2011*, but no drawing has been illustrated for this vase. Executed using the cire perdue or lost wax technique, this is a unique piece.



47

AN ORAN VASE, NO. 999

designed 1927, clear and frosted

10½ in. (26.8 cm.) high
wheel-engraved R. LALIQUE FRANCE
(nicks)

£8,000-12,000

\$13,000-19,000

€12,000-17,000



48

A SERPENTS VASE, NO. 896

designed 1924, clear and frosted

10 in. (25.4 cm.) high

intaglio *R. LALIQUE*

£10,000-15,000

\$16,000-23,000

€14,000-21,000



***49**

A PERRUCHES VASE, NO. 876

designed 1919, cased opalescent

10½ in. (26.7 cm.) high

intaglio *R. LALIQUE* (tiny nicks to top rim)

£15,000-20,000

\$24,000-31,000

€21,000-28,000



***50**

A SAUTERELLES VASE, NO. 888

designed 1912, cased opalescent,
and blue and green stained

11¼ in. (28.5 cm.) high
later engraved *R. Lalique*

£15,000-25,000

\$24,000-39,000

€21,000-34,000



***51**

AN ALICANTE VASE, NO. 998

designed 1927, cased opalescent and blue stained

10 in. (25.4 cm.) high

engraved *R. Lalique France No. 998*

£15,000-25,000

\$24,000-39,000

€21,000-34,000



***52**

A *BACCHANTES VASE*, NO. 997

designed 1927, opalescent

9¾ in. (24.7 cm.) high
wheel-engraved *R. LALIQUE FRANCE*,
engraved No. 997

£15,000-20,000

\$24,000-31,000

€21,000-28,000



***53**

A QUATRE DANSEUSES SURTOUT,
NO. 1108

designed 1920, clear, frosted and sepia
stained, on patinated later bronze base

8¾ in. (22.2 cm.) high including base;
10 in. (25.5 cm.) wide
moulded *R. LALIQUE*

£8,000-12,000

\$13,000-19,000

€12,000-17,000



***54**

A DEUX FIGURINES TIMEPIECE, NO. 726

designed 1926, clear and frosted, on later
metal base

15 in. (38 cm.) high

later wheel-engraved R. LALIQUE FRANCE

£8,000-12,000

\$13,000-19,000

€12,000-17,000





55

A GRAND DÉPÔT SHADE, F
 designed 1928, clear and frosted;
 together with a composite glass base

21 in. (53.3 cm.) high overall;
 shade 12 in. (30 cm.) square
 wheel-engraved *R. LALIQUE FRANCE*
 (nicks)

£4,000-6,000

\$6,300-9,400
 €5,600-8,300



***56**

A PAIR OF ENTRELACS LAMPS,
 NO. 2161

designed 1926, clear and frosted, with white
 metal bases and later fabric shades

15¾ in. (40 cm.) high overall
 one engraved *R. Lalique France*

(2)

£2,500-3,500

\$4,000-5,500
 €3,500-4,800

***57**

A GROUPE DE SIX MOINEAUX, NO. 1218
designed 1933, clear and frosted, on later
base

6½ in. (16.5 cm.) high; 12¾ in. (32.4 cm.) wide
stencilled *R. LALIQUE FRANCE*

£2,000-3,000

\$3,200-4,700
€2,800-4,100



58

A GROS POISSON ALGUES, NO. 1101
designed 1922, clear and frosted, on later
patinated bronze base

overall 15 in. (38 cm.) high

fish 12 in. (30.5 cm.) high;

17 in. (43.2 cm.) wide

engraved *R. LALIQUE FRANCE* (polished)

£2,000-3,000

\$3,200-4,700
€2,800-4,100





***59**

A RONCE VASE, NO. 946

designed 1921, clear, frosted and blue stained

9½ in. (24.1 cm.) high
moulded *R. LALIQUE*, later engraved
R. Lalique France No. 946

£1,000-1,500

\$1,600-2,300
€1,400-2,100

***60**

A RONCE VASE, NO. 946

designed 1921, electric blue

9½ in. (24.1 cm.) high
moulded *R. LALIQUE*, later engraved *France*

£3,000-5,000

\$4,700-7,800
€4,200-6,900



***61**

A RONCE VASE, NO. 946

designed 1921, emerald green

9¼ in. (23.5 cm.) high
moulded *R. LALIQUE*, engraved *Lalique*

£4,000-6,000

\$6,300-9,400
€5,600-8,300

***62**

A RONCE VASE, NO. 946

designed 1921, cased pale butterscotch and
sepia stained

9¾ in. (24.3 cm.) high
engraved *R. Lalique*, later engraved *France*

£2,000-3,000

\$3,200-4,700
€2,800-4,100

***63**

A SAUTERELLES VASE, NO. 888

designed 1912, green and white stained

10¼ in. (27.5 cm.) high

later wheel-engraved *R. LALIQUE*

£12,000-18,000

\$19,000-28,000

€17,000-25,000



***66**

AN ARCHERS VASE, NO. 893

designed 1921, clear, frosted and blue stained

10½ in. (27 cm.) high
engraved *R. Lalique France*
(tiny crack to foot rim)

£2,500-3,500

\$4,000-5,500
€3,500-4,800





67

THREE CHARMES PLAFONNIERS,
NO. 2485

designed 1924, clear and frosted

13½ in. (34.3 cm.) diameter

moulded R. *LALIQUE*

(3)

£3,000-5,000

\$4,700-7,800

€4,200-6,900



68

A LAUSANNE PLAFONNIER, NO. 2479

designed 1929, clear and frosted

15 in. (38 cm.) diameter

moulded R. *LALIQUE FRANCE*

£2,000-3,000

\$3,200-4,700

€2,800-4,100



69

A MOINEAUX II CHANDELIER, NO. 2299

designed 1931, clear and frosted

shade 15 in. (38 cm.) square
stencilled *R. LALIQUE FRANCE* (2)

£5,000-7,000	\$7,900-11,000
	€6,900-9,600

***70**

A VERONE PLAFONNIER, NO. 2474

designed 1927, clear and frosted

16 in. (40.7 cm.) diameter (2)

£3,000-5,000	\$4,700-7,800
	€4,200-6,900





71

A LAUSANNE PLAFONNIER, NO. 2479

designed 1927, amber

15 in. (38 cm.) diameter

moulded *R. LALIQUE FRANCE*

£1,500-2,000

\$2,400-3,100

€2,100-2,800

***72**

A RINCEAUX PLAFONNIER, NO. 2468

designed 1926, amber

15 in. (38 cm.) diameter

wheel engraved *R. LALIQUE FRANCE*

(small crack)

£3,000-5,000

\$4,700-7,800

€4,200-6,900



***73**
A PAIR OF SOLIEL PLAFONNIERS,
NO, 2466
designed 1926, amber
12¼ in. (31cm.) diameter (2)
£8,000-12,000 \$13,000-19,000
€12,000-17,000



***74**

AN ESCARGOT VASE, NO. 931

designed 1920, clear, frosted and blue stained

8½ in. (21.5 cm.) high
moulded R. LALIQUE, engraved France

£2,000-3,000

\$3,200-4,700
€2,800-4,100



***75**

A PRUNES VASE, NO. 1037

designed 1930, clear, frosted and blue stained

7 in. (17.8 cm.) high
wheel-engraved R. LALIQUE FRANCE
(tiny nick to foot rim)

£2,000-3,000

\$3,200-4,700
€2,800-4,100

76

A SAUGE VASE, NO. 935

designed 1923, clear, frosted and green stained

10 in. (25.4 cm.) high
moulded R. *LALIQUE*

£1,000-1,500

\$1,600-2,300
€1,400-2,100



77

A VICHY VASE, NO. 10-909

designed 1937, clear, frosted and blue stained

6 7/8 in. (17 cm.) high
stencilled R. *LALIQUE FRANCE*

£1,200-1,800

\$1,900-2,800
€1,700-2,500





78

A BACCHANTES VASE, NO. 997

designed 1927, executed post-war, clear and frosted

9½ in. (24.5 cm.) high
engraved *Lalique France*

£1,500-2,000

\$2,400-3,100

€2,100-2,800

79

A CAMARGUE VASE, NO. 10-937

designed 1942, executed early post-war, clear, frosted and sepia stained

11¼ in. (28.6 cm.) high
stencilled *LALIQUE FRANCE* (reduced)

£3,000-5,000

\$4,700-7,800

€4,200-6,900



***80**

A PAIR OF GUIRLANDES VASES,
NO. 10-887

designed 1935, clear, frosted and black enamelled

8½ in. (21.4 cm.) high
one stencilled *R. LALIQUE*, engraved *France*;
the other later engraved *R. Lalique*
(polishing to bases) (2)

£2,000-3,000

\$3,200-4,700

€2,800-4,100

***81**

A TERPSICHORE VASE, NO. 10-911

designed 1937, clear and frosted

8 in. (20.3 cm.) high
stencilled *R. LALIQUE FRANCE*

£6,000-8,000

\$9,400-12,000

€8,300-11,000





***82**

A GRANDE NUE SOCLE LIERRE
STATUETTE, NO. 836

designed 1919, clear, frosted and sepia
stained, on later ebonised socle plinth

15¼ in. (40 cm.) high
engraved *R. Lalique France*

£8,000-12,000

\$13,000-19,000
€12,000-17,000



***83**

A DOUZE FIGURINES AVEC BOUCHON
FIGURINE, NO. 914

designed 1920, clear, frosted and russet
stained

12 in. (30.5 cm.) high
moulded *R. LALIQUE*,
engraved *R. Lalique*

£2,500-3,500

(2)
\$4,000-5,500
€3,500-4,800



84
A ROITELETS VASE, NO. 1065
designed 1931, clear, frosted and sepia
stained

11¼ in. (28.5 cm.) high
stencilled *R. LALIQUE FRANCE*

£2,500-3,500 \$4,000-5,500
€3,500-4,800



***85**
A FAUNE VASE, NO. 1062
designed 1931, clear, frosted and grey stained

12 in. (30.5 cm.) high
stencilled *R. LALIQUE FRANCE*

£2,000-2,500 \$3,200-3,900
€2,800-3,400



86

A SPIRALES VASE, NO. 1060

designed 1930, opalescent and blue stained

6¾ in. (17.1 cm.) high

stencilled in reverse *R. LALIQUE FRANCE*
(nicks)

£2,000-3,000

\$3,200-4,700

€2,800-4,100



***87**

AN ESCARGOT VASE, NO. 931

designed 1920, cased opalescent and blue
stained

8½ in. (21.5 cm.) high

engraved *R. Lalique France No. 931*

£4,000-6,000

\$6,300-9,400

€5,600-8,300



88
A DRUIDE VASE, NO. 937
designed 1924, cased opalescent

7½ in. (19 cm.) high
engraved R. Lalique France (polished)

£1,200-1,800	\$1,900-2,800
	€1,700-2,500



***89**
A DAVOS VASE, NO. 1079
designed 1932, cased opalescent

11¼ in. (28.5 cm.) high
stencilled R. LALIQUE FRANCE

£1,500-2,500	\$2,400-3,900
	€2,100-3,400



***90**
AN ARMORIQUE VASE, NO. 1000
designed 1927, cased opalescent

9 in. (22.8 cm.) high
engraved R. Lalique France No. 1000 (nick)

£2,000-3,000	\$3,200-4,700
	€2,800-4,100



91

A BOXED SET OF MENUHOLDERS, NO. 3506, 3507, 3508, 3509 AND 3511

designed 1924, comprising *Raisins, Paires, Cerises, two Prunes and Groseilles*, clear and frosted

each 1½ in. (4 cm.) high
 engraved *R. Lalique France*, one stencilled
R. LALIQUE, box gilt printed *LALIQUE*
11 RUE ROYALE PARIS (7)

£1,000-1,500

\$1,600-2,300

€1,400-2,100

92

A MARGUERITES BOWL, NO. 10-404

designed 1941, clear and frosted

13¼ in. (33.5 cm.) diameter
 stencilled *R. LALIQUE FRANCE*

£500-700

\$790-1,100

€690-960





***93**

A BRESSE VASE, NO. 1073

designed 1931, opalescent green and white stained

4¼ in. (10.8 cm.) high
stencilled *R. LALIQUE FRANCE*

£1,000-1,500	\$1,600-2,300
	€1,400-2,100

***94**

A LE MANS VASE, NO. 1074

designed 1931, opalescent green and white stained

4 in. (10 cm.) high
stencilled *R. LALIQUE FRANCE*
(polishing to top rim)

£1,000-1,500	\$1,600-2,300
	€1,400-2,100

***95**

A BLUETS FRAME, NO. 254

designed 1926, clear, frosted and green stained

12¼ in. (31 cm.) high
stencilled *R. LALIQUE*

£1,000-1,500	\$1,600-2,300
	€1,400-2,100





***96**
 A HIRONDELLE CAR MASCOT, NO. 1143
 designed 1928, clear and frosted with a pale
 amethyst hue

6 in. (15.2 cm.) high
 engraved *R. Lalique*

£1,200-1,800

\$1,900-2,800
 €1,700-2,500



***97**
 A GRANDE LIBELLULE CAR MASCOT,
 NO. 1145

designed 1928, clear and frosted

8½ in. (20.5 cm.) high
 later wheel-engraved *R. LALIQUE*
 (minor polishing to base)

£2,000-3,000

\$3,200-4,700
 €2,800-4,100



98
 A L.T. PIVERS - 4 MISTI SCENT BOTTLE
 designed 1912, clear, frosted and blue
 stained

2 in. (5.2 cm.) high
 moulded *R. LALIQUE*

£1,200-1,800

\$1,900-2,800
 €1,700-2,500



99
 A ROGER ET GALLET - 15 LE JADE
 SCENT BOTTLE

designed 1926, jade in original box

bottle 3¾ in. (8.5 cm.) high
 moulded *RL FRANCE, LE JADE*, intaglio
ROGER ET GALLET PARIS, paper label to
 box *ROGER ET GALLET FRANCE* (2)

£2,000-3,000

\$3,200-4,700
 €2,800-4,100



(detail)

100

A D'ORSAY - 3 AMBRE SCENT BOTTLE WITH AIGLE STOPPER

designed 1911, clear, frosted and sepia stained

5¼ in. (13.3 cm.) high
moulded *LALIQUE*

£2,000-3,000

\$3,200-4,700
€2,800-4,100



101

A PAN SCENT BOTTLE, NO. 504

designed 1920, clear and frosted

5½ in. (13 cm.) high
moulded *R. LALIQUE*, engraved *R. Lalique*
France No. 504

£1,000-1,500

\$1,600-2,300
€1,400-2,100



102

A HOUBIGANT - 7 LA BELLE SAISON SCENT BOTTLE

designed 1920, clear, frosted and russet stained

4 in. (10.2 cm.) high
moulded *R. LALIQUE MADE IN FRANCE*

£1,000-1,500

\$1,600-2,300
€1,400-2,100



103

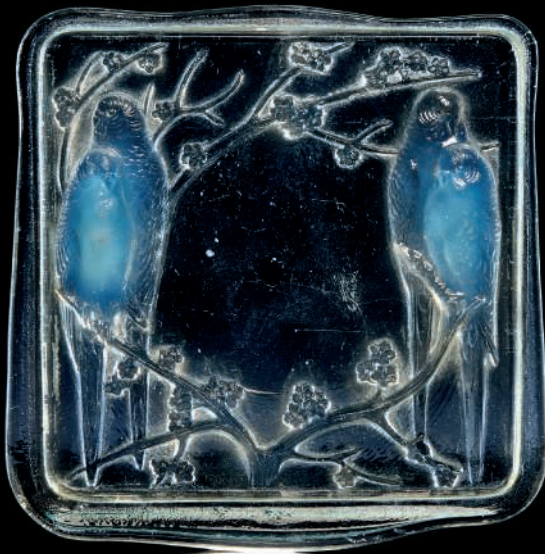
A MOLINARD - 2 LE BAISER DU FAUNE SCENT BOTTLE

designed 1928, clear and frosted, with original box

5¾ in. (15 cm.) high
intaglio *R. LALIQUE*, engraved *Molinard*
France, paper label

£1,800-2,200

\$2,900-3,400
€2,500-3,000



104



105



106

104

AN INSEPARABLES PLAQUE

designed 1926, opalescent

5¼ x 5¼ in. (13.3 x 13 cm.)
moulded *R. LALIQUE*

£1,000-1,500

\$1,600-2,300
€1,400-2,100

***105**

A LIEVRES VASE, NO. 942

designed 1923, cased opalescent and blue stained

6½ in. (16.5 cm.) high
engraved *R. Lalique France No. 942*

£1,500-2,500

\$2,400-3,900
€2,100-3,400

***106**

A RONCE VASE, NO. 946

designed 1921, cased opalescent and grey stained

9½ in. (24.1 cm.) high
moulded *R. LALIQUE*, engraved *Lalique*

£1,000-1,500

\$1,600-2,300
€1,400-2,100



107

***107**

A PERRUCHES BOWL, NO. 419

designed 1931, opalescent and blue stained

9 $\frac{7}{8}$ in. 25 (cm.) diameter

stencilled R. LALIQUE FRANCE

£2,500-3,500

\$4,000-5,500

€3,500-4,800

***108**

A CEYLAN VASE, NO. 905

designed 1924, opalescent and blue stained

9 $\frac{3}{4}$ in. (24.4 cm.) high

stencilled R. LALIQUE FRANCE

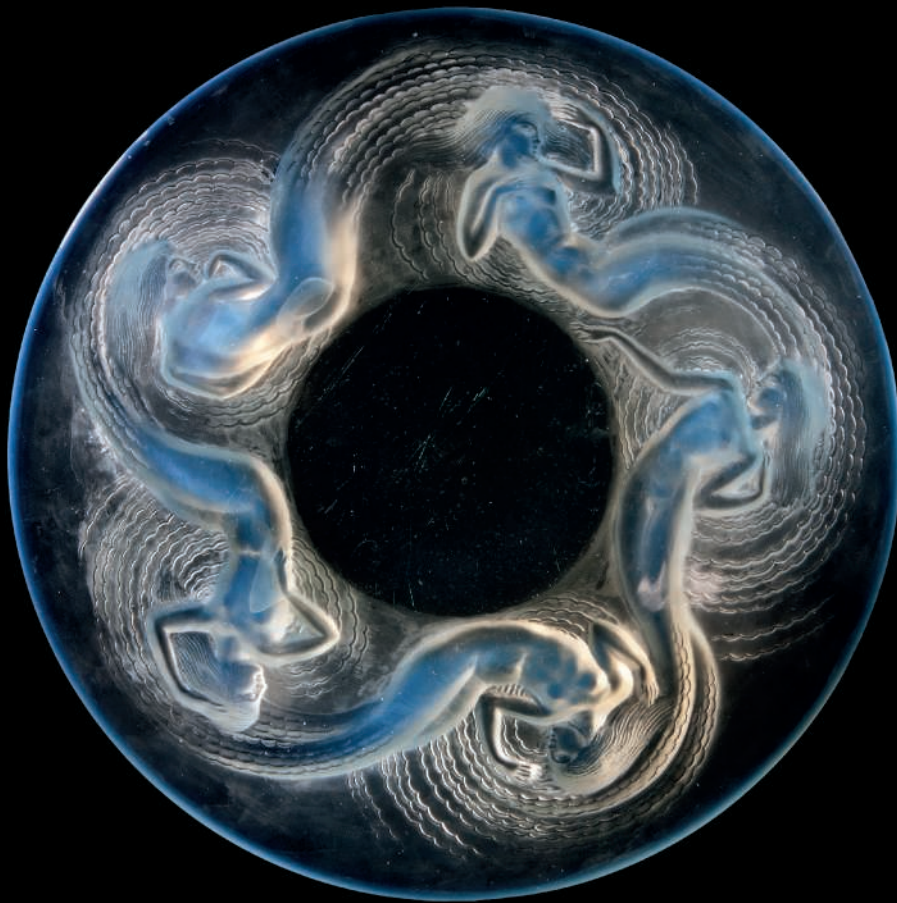
£2,500-3,500

\$4,000-5,500

€3,500-4,800



108



***109**

A SOLIEL PLAFONNIER, NO. 2466

designed 1926, opalescent

12 $\frac{1}{2}$ in. (32 cm.) diameter

£3,000-5,000

\$4,700-7,800

€4,200-6,900



110

A CALYPSO DISH, NO. 413

designed 1930, opalescent

14 in. (35.5 cm.) diameter

stencilled *R. LALIQUE FRANCE*

£2,200-2,800

\$3,500-4,400

€3,100-3,900

***111**

A FORMOSE VASE, NO. 934

designed 1924, cased opalescent and blue stained

6 $\frac{3}{4}$ in. (17.2 cm.) high

intaglio *R. LALIQUE* (nicks)

£1,500-2,500

\$2,400-3,900

€2,100-3,400



***112**

A DANAIDES VASE, NO. 972

designed 1926, opalescent

7 $\frac{1}{4}$ in. (18.5 cm.) high

wheel-engraved *R. LALIQUE FRANCE*

£3,000-5,000

\$4,700-7,800

€4,200-6,900



113

A GOBLET SIX FIGURINES VASE,
NO. 903

designed 1912, topaz

7½ in. (19.5 cm.) high
wheel engraved *R. LALIQUE*,
engraved *France*

£1,800-2,200

\$2,900-3,400
€2,500-3,000



***114**

AN EPICEA VASE, NO. 921

designed 1923, amber

9¼ in. (23.5 cm.) high
moulded *R. LALIQUE*

£4,000-5,000

\$6,300-7,800
€5,600-6,900

***115**

A SOPHORA VASE, NO. 977

designed 1926, grey and white stained

10½ in. (27 cm.) high

stencilled *R. LALIQUE FRANCE*

£3,000-5,000

\$4,700-7,800

€4,200-6,900





***116**

A CHARDONS VASE, NO. 929
designed 1922, cased butterscotch

7 $\frac{1}{2}$ in. (19.4 cm.) high
moulded R. LALIQUE

£3,000-5,000

\$4,700-7,800
€4,200-6,900



***117**

A MALESHERBES VASE, NO. 1014
designed 1927, cased jade and white stained

9 $\frac{1}{2}$ in. (23.8 cm.) high
engraved R. Lalique France No. 1014

£3,000-5,000

\$4,700-7,800
€4,200-6,900

***118**

A FORMOSE VASE, NO. 934

designed 1924, cased yellow

7 in. (17.8 cm.) high
intaglio R. LALIQUE

£5,000-7,000

\$7,900-11,000
€6,900-9,600



***119**

A FORMOSE VASE, NO. 934

designed 1924, cased jade green

6 7/8 in. (17.5 cm.) high
engraved R. LALIQUE France No. 934

£5,000-7,000

\$7,900-11,000
€6,900-9,600



***120**

A FORMOSE VASE, NO. 934

designed 1924, cased red

7 in. (17.8 cm.) high
intaglio R. LALIQUE

£7,000-9,000

\$11,000-14,000
€9,700-12,000



CONDITIONS OF SALE • BUYING AT CHRISTIE'S

CONDITIONS OF SALE

These Conditions of Sale and the Important Notices and Explanation of Cataloguing Practice set out the terms on which we offer the **lots** listed in this catalogue for sale. By registering to bid and/or by bidding at auction you agree to these terms, so you should read them carefully before doing so. You will find a glossary at the end explaining the meaning of the words and expressions coloured in **bold**.

Unless we own a **lot** (Δ symbol, Christie's acts as agent for the seller.

A BEFORE THE SALE

1 DESCRIPTION OF LOTS

(a) Certain words used in the catalogue description have special meanings. You can find details of these on the page headed 'Important Notices and Explanation of Cataloguing Practice' which forms part of these terms. You can find a key to the Symbols found next to certain catalogue entries under the section of the catalogue called 'Symbols Used in this Catalogue'.

(b) Our description of any **lot** in the catalogue, any **condition** report and any other statement made by us (whether orally or in writing) about any **lot**, including about its nature or **condition**, artist, period, materials, approximate dimensions or **provenance** are our opinion and not to be relied upon as a statement of fact. We do not carry out in-depth research of the sort carried out by professional historians and scholars. All dimensions and weights are approximate only.

2 OUR RESPONSIBILITY FOR OUR DESCRIPTION OF LOTS

We do not provide any guarantee in relation to the nature of a **lot** apart from our **authenticity warranty** contained in paragraph E2 and to the extent provided in paragraph I below.

3 CONDITION

(a) The **condition** of **lots** sold in our auctions can vary widely due to factors such as age, previous damage, restoration, repair and wear and tear. Their nature means that they will rarely be in perfect **condition**. **Lots** are sold 'as is', in the **condition** they are in at the time of the sale, without any representation or warranty or assumption of liability of any kind as to **condition** by Christie's or by the seller.

(b) Any reference to **condition** in a catalogue entry or in a **condition** report will not amount to a full description of **condition**, and images may not show a **lot** clearly. Colours and shades may look different in print or on screen to how they look on physical inspection. **Condition** reports may be available to help you evaluate the **condition** of a **lot**. **Condition** reports are provided free of charge as a convenience to our buyers and are for guidance only. They offer our opinion but they may not refer to all faults, inherent defects, restoration, alteration or adaptation because our staff are not professional restorers or conservators. For that reason they are not an alternative to examining a **lot** in person or taking your own professional advice. It is your responsibility to ensure that you have requested, received and considered any **condition** report.

4 VIEWING LOTS PRE-AUCTION

(a) If you are planning to bid on a **lot**, you should inspect it personally or through a knowledgeable representative before you make a bid to make sure that you accept the description and its **condition**. We recommend you get your own advice from a restorer or other professional adviser.

(b) Pre-auction viewings are open to the public free of charge. Our specialists may be available to answer questions at pre-auction viewings or by appointment.

5 ESTIMATES

Estimates are based on the **condition**, rarity, quality and **provenance** of the **lots** and on prices recently paid at auction for similar property. **Estimates** can change. Neither you, nor anyone else, may rely on any **estimates** as a prediction or guarantee of the actual selling price of a **lot** or its value for any other purpose. **Estimates** do not include the **buyer's premium** or any applicable taxes.

6 WITHDRAWAL

Christie's may, at its option, withdraw any **lot** at any time prior to or during the sale of the **lot**. Christie's has no liability to you for any decision to withdraw.

7 JEWELLERY

(a) Coloured gemstones (such as rubies, sapphires and emeralds) may have been treated to improve their look, through methods such as heating and oiling. These methods are accepted by the international jewellery trade but may make the gemstone less strong and/or require special care over time.

(b) All types of gemstones may have been improved by some method. You may request a gemmological report for any item which does not have a report if the request is made to us at least three weeks before the date of the auction and you pay the fee for the report.

(c) We do not obtain a gemmological report for every gemstone sold in our auctions. Where we do get gemmological reports from internationally accepted gemmological laboratories, such reports will be described in the catalogue. Reports from American gemmological laboratories will describe any improvement or treatment to the gemstone. Reports from European gemmological laboratories will describe any improvement or treatment only if we request that they do so, but will confirm when no improvement or treatment has been made. Because of differences in approach and technology, laboratories may not agree whether a particular gemstone has been treated, the amount of treatment or whether treatment is permanent. The gemmological laboratories will only report on the improvements or treatments known to the laboratories at the date of the report.

(d) For jewellery sales, **estimates** are based on the information in any gemmological report or, if no report is available, assume that the gemstones may have been treated or enhanced.

8 WATCHES & CLOCKS

(a) Almost all clocks and watches are repaired in their lifetime and may include parts which are not original. We do not give a **warranty** that any individual component part of any watch is **authentic**. Watchbands described as 'associated' are not part of the original watch and may not be **authentic**. Clocks may be sold without pendulums, weights or keys.

(b) As collectors' watches often have very fine and complex mechanisms, a general service, change of battery or further repair work may be necessary, for which you are responsible. We do not give a **warranty** that any watch is in good working order. Certificates are not available unless described in the catalogue.

(c) Most wristwatches have been opened to find out the type and quality of movement. For that reason, wristwatches with water resistant cases may not be waterproof and we recommend you have them checked by a competent watchmaker before use. Important information about the sale, transport and shipping of watches and watchbands can be found in paragraph H2(h).

B REGISTERING TO BID

1 NEW BIDDERS

(a) If this is your first time bidding at Christie's or you are a returning bidder who has not bought anything from any of our salerooms within the last two years you must register at least 48 hours before an auction to give us enough time to process and approve your registration. We may, at our option, decline to permit you to register as a bidder. You will be asked for the following:

(i) for individuals: Photo identification (driving licence, national identity card or passport) and, if not shown on the ID document, proof of your current address (for example, a current utility bill or bank statement).

(ii) for corporate clients: Your Certificate of Incorporation or equivalent document(s) showing your name and registered address together with documentary proof of directors and beneficial owners; and

(iii) for trusts, partnerships, offshore companies and other business structures, please contact us in advance to discuss our requirements.

(b) We may also ask you to give us a financial reference and/or a deposit as a condition of allowing you to bid. For help, please contact our Credit Department on +44 (0)20 7839 9060.

2 RETURNING BIDDERS

We may at our option ask you for current identification as described in paragraph B1(a) above, a financial reference or a deposit as a condition of allowing you to bid. If you have not bought anything from any of our salerooms in the last two years or if you want to spend more than on previous occasions, please contact our Credit Department on +44 (0)20 7839 9060.

3 IF YOU FAIL TO PROVIDE THE RIGHT DOCUMENTS

If in our opinion you do not satisfy our bidder identification and registration procedures including, but not limited to completing any anti-money laundering and/or anti-terrorism financing checks we may require to our satisfaction, we may refuse to register you to bid, and if you make a successful bid, we may cancel the contract for sale between you and the seller.

4 BIDDING ON BEHALF OF ANOTHER PERSON

If you are bidding on behalf of another person, that person will need to complete the registration requirements above before you can bid, and supply a signed letter authorising you to bid for him/her. A bidder accepts personal liability to pay the **purchase price** and all other sums due unless it has been agreed in writing with Christie's before commencement of the auction that the bidder is acting as an agent on behalf of a named third party acceptable to Christie's and that Christie's will only seek payment from the named third party.

5 BIDDING IN PERSON

If you wish to bid in the saleroom you must register for a numbered bidding paddle at least 30 minutes before the auction. You may register online at www.christies.com or in person. For help, please contact the Credit Department on +44 (0)20 7839 9060.

6 BIDDING SERVICES

The bidding services described below are a free service offered as a convenience to our clients and Christie's is not responsible for any error (human or otherwise), omission or breakdown in providing these services.

(a) Phone Bids

Your request for this service must be made no later than 24 hours prior to the auction. We will accept bids by telephone for **lots** only if our staff are available to take the bids. If you need to bid in a language other than in English, you must arrange this well before the auction. We may record telephone bids. By bidding on the telephone, you are agreeing to us recording your conversations. You also agree that your telephone bids are governed by these Conditions of Sale.

(b) Internet Bids on Christie's Live™

For certain auctions we will accept bids over the Internet. Please visit www.christies.com/livebidding and click on the 'Bid Live' icon to see details of how to watch, hear and bid at the auction from your computer. As well as these Conditions of Sale, internet bids are governed by the Christie's LIVE™ terms of use which are available on www.christies.com.

(c) Written Bids

You can find a Written Bid Form at the back of our catalogues, at any Christie's office or by choosing the sale and viewing the **lots** online at www.christies.com. We must receive your completed Written Bid Form at least 24 hours before the auction. Bids must be placed in the currency of the saleroom. The auctioneer will take reasonable steps to carry out written bids at the lowest possible price, taking into account the **reserve**. If you make a written bid on a **lot** which does not have a **reserve** and there is no higher bid than yours, we will bid on your behalf at around 50% of the **low estimate** or, if lower, the amount of your bid. If we receive written bids on a **lot** for identical amounts, and at the auction these are the highest bids on the **lot**, we will sell the **lot** to the bidder whose written bid we received first.

C AT THE SALE

1 WHO CAN ENTER THE AUCTION

We may, at our option, refuse admission to our premises or decline to permit participation in any auction or to reject any bid.

2 RESERVES

Unless otherwise indicated, all **lots** are subject to a **reserve**. We identify **lots** that are offered without **reserve** with the symbol Δ next to the **lot** number. The **reserve** cannot be more than the **lot's low estimate**.

3 AUCTIONEER'S DISCRETION

The auctioneer can at his sole option:

- refuse any bid;
- move the bidding backwards or forwards in any way he or she may decide, or change the order of the **lots**;
- withdraw any **lot**;
- divide any **lot** or combine any two or more **lots**;
- reopen or continue the bidding even after the hammer has fallen; and
- in the case of error or dispute and whether during or after the auction, to continue the bidding, determine the successful bidder, cancel the sale of the **lot**, or reoffer and resell any **lot**. If any dispute relating to bidding arises during or after the auction, the auctioneer's decision in exercise of this option is final.

4 BIDDING

The auctioneer accepts bids from:

- bidders in the saleroom;
- telephone bidders, and internet bidders through 'Christie's LIVE™' (as shown above in Section B6); and
- written bids (also known as absentee bids or commission bids) left with us by a bidder before the auction.

5 BIDDING ON BEHALF OF THE SELLER

The auctioneer may, at his or her sole option, bid on behalf of the seller up to but not including the amount of the **reserve** either by making consecutive bids or by making bids in response to other bidders. The auctioneer will not identify these as bids made on behalf of the seller and will not make any bid on behalf of the seller at or above the **reserve**. If **lots** are offered without **reserve**, the auctioneer will generally decide to open the bidding at 50% of the **low estimate** for the **lot**. If no bid is made at that level, the auctioneer may decide to go backwards at his or her sole option until a bid is made, and then continue up from that amount. In the event that there are no bids on a **lot**, the auctioneer may deem such **lot** unsold.

6 BID INCREMENTS

Bidding generally starts below the **low estimate** and increases in steps (bid increments). The auctioneer will decide at his or her sole option where the bidding should start and the bid increments. The usual bid increments are shown for guidance only on the Written Bid Form at the back of this catalogue.

7 CURRENCY CONVERTER

The saleroom video screens (and Christie's LIVE™) may show bids in some other major currencies as well as sterling. Any conversion is for guidance only and we cannot be bound by any rate of exchange used. Christie's is not responsible for any error (human or otherwise), omission or breakdown in providing these services.

8 SUCCESSFUL BIDS

Unless the auctioneer decides to use his or her discretion as set out in paragraph C3 above, when the auctioneer's hammer strikes, we have accepted the last bid. This means a contract for sale has been formed between the seller and the successful bidder. We will issue an invoice only to the registered bidder who made the successful bid. While we send out invoices by post and/or email after the auction, we do not accept responsibility for telling you whether or not your bid was successful. If you have bid by written bid, you should contact us by telephone or in person as soon as possible after the auction to get details of the outcome of your bid to avoid having to pay unnecessary storage charges.

9 LOCAL BIDDING LAWS

You agree that when bidding in any of our sales that you will strictly comply with all local laws and regulations in force at the time of the sale for the relevant sale site.

D THE BUYER'S PREMIUM, TAXES AND ARTIST'S RESALE ROYALTY

1 THE BUYER'S PREMIUM

In addition to the **hammer price**, the successful bidder agrees to pay us a **buyer's premium** on the **hammer price** of each lot sold. On all lots we charge 25% of the **hammer price** up to and including £50,000, 20% on that part of the **hammer price** over £50,000 and up to and including £1,000,000, and 12% of that part of the **hammer price** above £1,000,000.

2 TAXES

The successful bidder is responsible for any applicable tax including any VAT, sales or compensating use tax or equivalent tax wherever they arise on the **hammer price** and the **buyer's premium**. It is the buyer's responsibility to ascertain and pay all taxes due. You can find details of how VAT and VAT reclaimers are dealt with in the section of the catalogue headed 'VAT Symbols and Explanation'. VAT charges and refunds depend on the particular circumstances of the buyer so this section, which is not exhaustive, should be used only as a general guide. In all circumstances EU and UK law takes precedence. If you have any questions about VAT, please contact Christie's VAT Department on +44 (0)20 7839 9060 (email: VAT_london@christies.com, fax: +44 (0)20 3219 6076).

3 ARTIST'S RESALE ROYALTY

In certain countries, local laws entitle the artist or the artist's estate to a royalty known as 'artist's resale right' when any lot created by the artist is sold. We identify these lots with the symbol λ next to the lot number. If these laws apply to a lot, you must pay us an extra amount equal to the royalty. We will pay the royalty to the appropriate authority on the seller's behalf.

The artist's resale royalty applies if the **hammer price** of the lot is 1,000 euro or more. The total royalty for any lot cannot be more than 12,500 euro. We work out the amount owed as follows:

Royalty for the portion of the **hammer price** (in euros)

- 4% up to 50,000
- 3% between 50,000.01 and 200,000
- 1% between 200,000.01 and 350,000
- 0.50% between 350,000.01 and 500,000

over 500,000, the lower of 0.25% and 12,500 euro. We will work out the artist's resale royalty using the euro to sterling rate of exchange of the European Central Bank on the day of the auction.

E WARRANTIES

1 SELLER'S WARRANTIES

For each lot, the seller gives a **warranty** that the seller:

- (a) is the owner of the lot or a joint owner of the lot acting with the permission of the other co-owners or, if the seller is not the owner or a joint owner of the lot, has the permission of the owner to sell the lot, or the right to do so in law; and
- (b) has the right to transfer ownership of the lot to the buyer without any restrictions or claims by anyone else.

If either of the above **warranties** are incorrect, the seller shall not have to pay more than the **purchase price** (as defined in paragraph F1(a) below) paid by you to us. The seller will not be responsible to you for any reason for loss of profits or business, expected savings, loss of opportunity or interest, costs, damages, **other damages** or expenses. The seller gives no **warranty** in relation to any lot other than as set out above and, as far as the seller is allowed by law, all **warranties** from the seller to you, and all other obligations upon the seller which may be added to this agreement by law, are excluded.

2 OUR AUTHENTICITY WARRANTY

We warrant, subject to the terms below, that the lots in our sales are authentic (our **authenticity warranty**). If, within five years of the date of the auction, you satisfy us that your lot is not **authentic**, subject to the terms below, we will refund the **purchase price** paid by you. The meaning of **authentic** can be found in the glossary at the end of these Conditions of Sale. The terms of the **authenticity warranty** are as follows:

- (a) It will be honoured for a period of five years

from the date of the auction. After such time, we will not be obligated to honour the **authenticity warranty**.

(b) It is given only for information shown in **UPPERCASE type** in the first line of the **catalogue description** (the '**Heading**'). It does not apply to any information other than in the **Heading** even if shown in **UPPERCASE type**.

(c) The **authenticity warranty** does not apply to any **Heading** or part of a **Heading** which is **qualified**. **Qualified** means limited by a clarification in a lot's **catalogue description** or by the use in a **Heading** of one of the terms listed in the section titled **Qualified Headings** on the page of the catalogue headed 'Important Notices and Explanation of Cataloguing Practice'. For example, use of the term 'ATTRIBUTED TO...' in a **Heading** means that the lot is in Christie's opinion probably a work by the named artist but no **warranty** is provided that the lot is the work of the named artist. Please read the full list of **Qualified Headings** and a lot's full **catalogue description** before bidding.

(d) The **authenticity warranty** applies to the **Heading** as amended by any **Saleroom Notice**.

(e) The **authenticity warranty** does not apply where scholarship has developed since the auction leading to a change in generally accepted opinion. Further, it does not apply if the **Heading** either matched the generally accepted opinion of experts at the date of the sale or drew attention to any conflict of opinion.

(f) The **authenticity warranty** does not apply if the lot can only be shown not to be **authentic** by a scientific process which, on the date we published the catalogue, was not available or generally accepted for use, or which was unreasonably expensive or impractical, or which was likely to have damaged the lot.

(g) The benefit of the **authenticity warranty** is only available to the original buyer shown on the invoice for the lot issued at the time of the sale and only if the original buyer has owned the lot continuously between the date of the auction and the date of claim. It may not be transferred to anyone else.

(h) In order to claim under the **authenticity warranty** you must:

- (i) give us written details, including full supporting evidence, of any claim within five years of the date of the auction;
- (ii) at Christie's option, we may require you to provide the written opinions of two recognised experts in the field of the lot mutually agreed by you and us in advance confirming that the lot is not **authentic**. If we have any doubts, we reserve the right to obtain additional opinions at our expense; and
- (iii) return the lot at your expense to the saleroom from which you bought it in the **condition** it was in at the time of sale.

(i) Your only right under this **authenticity warranty** is to cancel the sale and receive a refund of the **purchase price** paid by you to us. We will not, in any circumstances, be required to pay you more than the **purchase price** nor will we be liable for any loss of profits or business, loss of opportunity or value, expected savings or interest, costs, damages, **other damages** or expenses.

(j) **Books**. Where the lot is a book, we give an additional **warranty** for 14 days from the date of the sale that if on collation any lot is defective in text or illustration, we will refund your **purchase price**, subject to the following terms:

- (a) This additional **warranty** does not apply to:
 - (i) the absence of blanks, half titles, tissue guards or advertisements, damage in respect of bindings, stains, spotting, marginal tears or other defects not affecting completeness of the text or illustration;
 - (ii) drawings, autographs, letters or manuscripts, signed photographs, music, atlases, maps or periodicals;
 - (iii) books not identified by title;
 - (iv) lots sold without a printed **estimate**;
 - (v) books which are described in the catalogue as sold not subject to return; or
 - (vi) defects stated in any **condition** report or announced at the time of sale.
- (b) To make a claim under this paragraph you must give written details of the defect and return the lot to the sale room at which you bought it in the same **condition** as at the time of sale, within 14 days of the date of the sale.

(k) **South East Asian Modern and Contemporary Art and Chinese Calligraphy and Painting**. In these categories, the **authenticity warranty**

does not apply because current scholarship does not permit the making of definitive statements. Christie's does, however, agree to cancel a sale in either of these two categories of art where it has been proven the lot is a forgery. Christie's will refund to the original buyer the **purchase price** in accordance with the terms of Christie's **authenticity warranty**, provided that the original buyer notifies us with full supporting evidence documenting the forgery claim within twelve (12) months of the date of the auction. Such evidence must be satisfactory to us that the lot is a forgery in accordance with paragraph E2(h)(ii) above and the lot must be returned to us in accordance with E2(h)(ii) above. Paragraphs E2(b), (c), (d), (e), (f) and (g) and (i) also apply to a claim under these categories.

F PAYMENT

1 HOW TO PAY

(a) Immediately following the auction, you must pay the **purchase price** being:

- (i) the **hammer price**; and
- (ii) the **buyer's premium**; and
- (iii) any amounts due under section D3 above; and
- (iv) any duties, goods, sales, use, compensating or service tax or VAT.

Payment is due no later than by the end of the seventh calendar day following the date of the auction (the '**due date**').

(b) We will only accept payment from the registered bidder. Once issued, we cannot change the buyer's name on an invoice or re-issue the invoice in a different name. You must pay immediately even if you want to export the lot and you need an export licence.

(c) You must pay for lots bought at Christie's in the United Kingdom in the currency stated on the invoice in one of the following ways:

- (i) Wire transfer
You must make payments to:
Lloyds Bank Plc, City Office, PO Box 217, 72 Lombard Street, London EC3P 3BT. Account number: 00172710, sort code: 30-00-02 Swift code: LOYDGB2LCTY. IBAN (international bank account number): GB81 LOYD 3000 0200 1727 10.
- (ii) Credit Card.

We accept most major credit cards subject to certain conditions. To make a 'cardholder not present' (CNP) payment, you must complete a CNP authorisation form which you can get from our Cashiers Department. You must send a completed CNP authorisation form by fax to +44 (0)20 7389 2869 or by post to the address set out in paragraph (d) below. If you want to make a CNP payment over the telephone, you must call +44 (0)20 7389 9060. CNP payments cannot be accepted by all salerooms and are subject to certain restrictions. Details of the conditions and restrictions applicable to credit card payments are available from our Cashiers Department, whose details are set out in paragraph (d) below.

(iii) Cash
We accept cash subject to a maximum of £5,000 per buyer per year at our Cashier's Department only (subject to conditions).

(iv) Banker's draft
You must make these payable to Christie's and there may be conditions.

(v) Cheque
You must make cheques payable to Christie's. Cheques must be from accounts in pounds sterling from a United Kingdom bank.

(d) You must quote the sale number, your invoice number and client number when making a payment. All payments sent by post must be sent to: Christie's, Cashiers Department, 8 King Street, St James's, London SW1Y 6QT.

(e) For more information please contact our Cashiers Department by phone on +44 (0)20 7389 9060 or fax on +44 (0)20 7389 2869.

2. TRANSFERRING OWNERSHIP TO YOU

You will not own the lot and ownership of the lot will not pass to you until we have received full and clear payment of the **purchase price**, even in circumstances where we have released the lot to the buyer.

3 TRANSFERRING RISK TO YOU

The risk in and responsibility for the lot will transfer to you from whichever is the earlier of the following:

- (a) When you collect the lot; or

(b) At the end of the 90th day following the date of the auction or, if earlier, the date the lot is taken into care by a third party warehouse as set out on the page headed 'Storage and Collection', unless we have agreed otherwise with you in writing.

4 WHAT HAPPENS IF YOU DO NOT PAY

(a) If you fail to pay us the **purchase price** in full by the **due date**, we will be entitled to do one or more of the following (as well as enforce our rights under paragraph F5 and any other rights or remedies we have by law):

(i) to charge interest from the **due date** at a rate of 5% a year above the UK Lloyds Bank base rate from time to time on the unpaid amount due;

(ii) we can cancel the sale of the lot. If we do this, we may sell the lot again, publicly or privately on such terms we shall think necessary or appropriate, in which case you must pay us any shortfall between the **purchase price** and the proceeds from the resale. You must also pay all costs, expenses, losses, damages and legal fees we have to pay or may suffer and any shortfall in the seller's commission on the resale;

(iii) we can pay the seller an amount up to the net proceeds payable in respect of the amount bid by your default in which case you acknowledge and understand that Christie's will have all of the rights of the seller to pursue you for such amounts;

(iv) we can hold you legally responsible for the **purchase price** and may begin legal proceedings to recover it together with other losses, interest, legal fees and costs as far as we are allowed by law;

(v) we can take what you owe us from any amounts which we or any company in the **Christie's Group** may owe you (including any deposit or other part-payment which you have paid to us);

(vi) we can, at our option, reveal your identity and contact details to the seller;

(vii) we can reject at any future auction any bids made by or on behalf of the buyer or to obtain a deposit from the buyer before accepting any bids;

(viii) to exercise all the rights and remedies of a person holding security over any property in our possession owned by you, whether by way of pledge, security interest or in any other way as permitted by the law of the place where such property is located. You will be deemed to have granted such security to us and we may retain such property as collateral security for your obligations to us; and

(ix) we can take any other action we see necessary or appropriate.

(b) If you owe money to us or to another **Christie's Group** company, we can use any amount you do pay, including any deposit or other part-payment you have made to us, or which we owe you, to pay off any amount you owe to us or another **Christie's Group** company for any transaction.

5 KEEPING YOUR PROPERTY

If you owe money to us or to another **Christie's Group** company, as well as the rights set out in F4 above, we can use or deal with any of your property we hold or which is held by another **Christie's Group** company in any way we are allowed to by law. We will only release your property to you after you pay us or the relevant **Christie's Group** company in full for what you owe. However, if we choose, we can also sell your property in any way we think appropriate. We will use the proceeds of the sale against any amounts you owe us and we will pay any amount left from that sale to you. If there is a shortfall, you must pay us any difference between the amount we have received from the sale and the amount you owe us.

G COLLECTION AND STORAGE

1 COLLECTION

(a) Once you have made full and clear payment, you must collect the lot promptly following the auction. You may not collect the lot until you have made full and clear payment of all amounts due to us.

(b) If you have paid for the lot in full, but you do not collect the lot within 90 calendar days after the sale, we may sell it, unless otherwise agreed in writing. If we do this we will pay you the proceeds of the sale after taking our storage charges and any other amounts you owe us and any **Christie's Group** company.

(c) Information on collecting lots is set out on an information sheet which you can get from the bidder registration staff or Christie's cashiers +44 (0)20 7389 9060.

2 STORAGE

- (a) If you have not collected the **lot** promptly following the auction, we or our appointed agents can remove the **lot** at our option to a warehouse.
- (b) If you have not collected the **lot** within 90 calendar days of the auction, we will charge you storage costs and can, at our option, charge you transport costs and handling fees for moving the **lot** to and within the warehouse.
- (c) Details of the removal of the **lot** to a warehouse, fees and costs are set out at the back of the catalogue on the page headed 'Storage and Collection'. You may be liable to us or our agent directly for these costs.

H TRANSPORT AND SHIPPING

1 TRANSPORT AND SHIPPING

We will enclose a transport and shipping form with each invoice sent to you. You must make all transport and shipping arrangements. However, we can arrange to pack, transport and ship your property if you ask us to and pay the costs of doing so. We recommend that you ask us for an **estimate**, especially for any large items or items of high value that need professional packing before you bid. We may also suggest other handlers, packers, transporters or experts if you ask us to do so. For more information, please contact Christie's Art Transport on +44 (0)20 7839 9060. See the information set out at www.christies.com/shipping or contact us at arttransport_london@christies.com. We will take reasonable care when we are handling, packing, transporting and shipping a **lot**. However, if we recommend another company for any of these purposes, we are not responsible for their acts, failure to act or neglect.

2 EXPORT AND IMPORT

Any **lot** sold at auction may be affected by laws on exports from the country in which it is sold and the import restrictions of other countries. Many countries require a declaration of export for property leaving the country and/or an import declaration on entry of property into the country. Local laws may prevent you from importing a **lot** or may prevent you selling a **lot** in the country you import it into.

- (a) You alone are responsible for getting advice about and meeting the requirements of any laws or regulations which apply to exporting or importing any **lot** prior to bidding. If you are refused a licence or there is a delay in getting one, you must still pay us in full for the **lot**. We may be able to help you apply for the appropriate licences if you ask us to and pay our fee for doing so. However, we cannot guarantee that you will get one. For more information, please contact Christie's Art Transport Department on +44 (0)20 7839 9060. See the information set out at www.christies.com/shipping or contact us at arttransport_london@christies.com.

(b) Lots made of protected species

Lots made of or including (regardless of the percentage) endangered and other protected species of wildlife are marked with the symbol ~ in the catalogue. This material includes, among other things, ivory, tortoiseshell, crocodile skin, rhinoceros horn, whalebone, certain species of coral, and Brazilian rosewood. You should check the relevant customs laws and regulations before bidding on any **lot** containing wildlife material if you plan to import the **lot** into another country. Several countries refuse to allow you to import property containing these materials, and some other countries require a licence from the relevant regulatory agencies in the countries of exportation as well as importation. In some cases, the **lot** can only be shipped with an independent scientific confirmation of species and/or age and you will need to obtain these at your own cost. If a **lot** contains elephant ivory, or any other wildlife material that could be confused with elephant ivory (for example, mammoth ivory, walrus ivory, helmeted hornbill ivory), please see further important information in paragraph (c) if you are proposing to import the **lot** into the USA. We will not be obliged to cancel your purchase and refund the **purchase price** if your **lot** may not be exported, imported or it is seized for any reason by a government authority. It is your responsibility to determine and satisfy the requirements of any applicable laws or regulations relating to the export or import of property containing such protected or regulated material.

- (c) **US import ban on African elephant ivory**
The USA prohibits the import of ivory from the African elephant. Any **lot** containing elephant ivory or other wildlife material that could be

easily confused with elephant ivory (for example, mammoth ivory, walrus ivory, helmeted hornbill ivory) can only be imported into the US with results of a rigorous scientific test acceptable to Fish & Wildlife, which confirms that the material is not African elephant ivory. Where we have conducted such rigorous scientific testing on a **lot** prior to sale, we will make this clear in the lot description. In all other cases, we cannot confirm whether a **lot** contains African elephant ivory, and you will buy that **lot** at your own risk and be responsible for any scientific test or other reports required for import into the USA at your own cost. If such scientific test is inconclusive or confirms the material is from the African elephant, we will not be obliged to cancel your purchase and refund the **purchase price**.

(d) Lots containing material that originates from Burma (Myanmar)

Lots which contain rubies or jadeite originating in Burma (Myanmar) may not generally be imported into the United States. As a convenience to US buyers, **lots** which contain rubies or jadeite of Burmese or indeterminate origin have been marked with the symbol Ψ in the catalogue. In relation to items that contain any other types of gemstones originating in Burma (e.g. sapphires) such items may be imported into the United States provided that the gemstones have been mounted or incorporated into jewellery outside of Burma and provided that the setting is not of a temporary nature (e.g. a string).

(e) Lots of Iranian origin

Some countries prohibit or restrict the purchase and/or import of Iranian-origin 'works of conventional craftsmanship' (works that are not by a recognised artist and/or that have a function, for example: carpets, bowls, ewers, tiles, ornamental boxes). For example, the USA prohibits the import of this type of property and its purchase by US persons (wherever located). Other countries, such as Canada, only permit the import of this property in certain circumstances. As a convenience to buyers, Christie's indicates under the title of a **lot** if the **lot** originates from Iran (Persia). It is your responsibility to ensure you do not bid on or import a **lot** in contravention of the sanctions or trade embargoes that apply to you.

(f) Gold

Gold of less than 18ct does not qualify in all countries as 'gold' and may be refused import into those countries as 'gold'.

(g) Jewellery over 50 years old

Under current laws, jewellery over 50 years old which is worth £34,300 or more will require an export licence which we can apply for on your behalf. It may take up to eight weeks to obtain the export jewellery licence.

(h) Watches

(i) Many of the watches offered for sale in this catalogue are pictured with straps made of endangered or protected animal materials such as alligator or crocodile. These **lots** are marked with the symbol ~ in the catalogue. These endangered species straps are shown for display purposes only and are not for sale. Christie's will remove and retain the strap prior to shipment from the sale site. At some sale sites, Christie's may, at its discretion, make the displayed endangered species strap available to the buyer of the lot free of charge if collected in person from the sale site within one year of the date of the sale. Please check with the department for details on a particular lot.

For all symbols and other markings referred to in paragraph H2, please note that **lots** are marked as a convenience to you, but we do not accept liability for errors or for failing to mark **lots**.

I OUR LIABILITY TO YOU

(a) We give no **warranty** in relation to any statement made, or information given, by us or our representatives or employees, about any **lot** other than as set out in the **authenticity warranty** and, as far as we are allowed by law, all **warranties** and other terms which may be added to this agreement by law are excluded. The seller's **warranties** contained in paragraph E1 are their own and we do not have any liability to you in relation to those **warranties**.

(b) (i) We are not responsible to you for any reason (whether for breaking this agreement or any other matter relating to your purchase of, or bid for, any **lot**) other than in the event of fraud or fraudulent misrepresentation by us or other than as expressly set out in these Conditions of Sale; or

(ii) give any representation, **warranty** or guarantee or assume any liability of any kind in respect of any **lot** with regard to merchantability, fitness for a particular purpose, description, size, quality, condition, attribution, authenticity, rarity,

importance, medium, provenance, exhibition history, literature, or historical relevance. Except as required by local law, any **warranty** of any kind is excluded by this paragraph.

(c) In particular, please be aware that our written and telephone bidding services, Christie's LIVE™, **condition** reports, currency converter and saleroom video screens are free services and we are not responsible to you for any error (human or otherwise), omission or breakdown in these services.

(d) We have no responsibility to any person other than a buyer in connection with the purchase of any **lot**.

(e) If, in spite of the terms in paragraphs (a) to (d) or E2(i) above, we are found to be liable to you for any reason, we shall not have to pay more than the **purchase price** paid by you to us. We will not be responsible to you for any reason for loss of profits or business, loss of opportunity or value, expected savings or interest, costs, damages, or expenses.

J OTHER TERMS

1 OUR ABILITY TO CANCEL

In addition to the other rights of cancellation contained in this agreement, we can cancel a sale of a **lot** if we reasonably believe that completing the transaction is, or may be, unlawful or that the sale places us or the seller under any liability to anyone else or may damage our reputation.

2 RECORDINGS

We may videotape and record proceedings at any auction. We will keep any personal information confidential, except to the extent disclosure is required by law. However, we may, through this process, use or share these recordings with another **Christie's Group** company and marketing partners to analyse our customers and to help us to tailor our services for buyers. If you do not want to be videotaped, you may make arrangements to make a telephone or written bid or bid on Christie's LIVE™ instead. Unless we agree otherwise in writing, you may not videotape or record proceedings at any auction.

3 COPYRIGHT

We own the copyright in all images, illustrations and written material produced by or for us relating to a **lot** (including the contents of our catalogues unless otherwise noted in the catalogue). You cannot use them without our prior written permission. We do not offer any guarantee that you will gain any copyright or other reproduction rights to the **lot**.

4 ENFORCING THIS AGREEMENT

If a court finds that any part of this agreement is not valid or is illegal or impossible to enforce, that part of the agreement will be treated as being deleted and the rest of this agreement will not be affected.

5 TRANSFERRING YOUR RIGHTS AND RESPONSIBILITIES

You may not grant a security over or transfer your rights or responsibilities under these terms on the contract of sale with the buyer unless we have given our written permission. This agreement will be binding on your successors or estate and anyone who takes over your rights and responsibilities.

6 TRANSLATIONS

If we have provided a translation of this agreement, we will use this original version in deciding any issues or disputes which arise under this agreement.

7 PERSONAL INFORMATION

We will hold and process your personal information and may pass it to another **Christie's Group** company for use as described in, and in line with, our privacy policy at www.christies.com.

8 WAIVER

No failure or delay to exercise any right or remedy provided under these Conditions of Sale shall constitute a waiver of that or any other right or remedy, nor shall it prevent or restrict the further exercise of that or any other right or remedy. No single or partial exercise of such right or remedy shall prevent or restrict the further exercise of that or any other right or remedy.

9 LAW AND DISPUTES

This agreement, and any non-contractual obligations arising out of or in connection with this agreement, or any other rights you may have relating to the purchase of a **lot** will be governed by the laws of England and Wales. Before we or you start any court proceedings

(except in the limited circumstances where the dispute, controversy or claim is related to proceedings brought by someone else and this dispute could be joined to those proceedings), we agree we will each try to settle the dispute by mediation following the Centre for Effective Dispute Resolution (CEDR) Model Mediation Procedure. We will use a mediator affiliated with CEDR who we and you agree to. If the dispute is not settled by mediation, you agree for our benefit that the dispute will be referred to and dealt with exclusively in the courts of England and Wales. However, we will have the right to bring proceedings against you in any other court.

10 REPORTING ON WWW.CHRISTIES.COM

Details of all **lots** sold by us, including **catalogue descriptions** and prices, may be reported on www.christies.com. Sales totals are **hammer price plus buyer's premium** and do not reflect costs, financing fees, or application of buyer's or seller's credits. We regret that we cannot agree to requests to remove these details from www.christies.com.

K GLOSSARY

authentic: a genuine example, rather than a copy or forgery of:

- (i) the work of a particular artist, author or manufacturer, if the **lot** is described in the **Heading** as the work of that artist, author or manufacturer;
- (ii) a work created within a particular period or culture, if the **lot** is described in the **Heading** as a work created during that period or culture;
- (iii) a work for a particular origin source if the **lot** is described in the **Heading** as being of that origin or source; or
- (iv) in the case of gems, a work which is made of a particular material, if the **lot** is described in the **Heading** as being made of that material.

authenticity warranty: the guarantee we give in this agreement that a **lot** is **authentic** as set out in section E2 of this agreement.

buyer's premium: the charge the buyer pays us along with the **hammer price**.

catalogue description: the description of a **lot** in the catalogue for the auction, as amended by any saleroom notice.

Christie's Group: Christie's International Plc, its subsidiaries and other companies within its corporate group.

condition: the physical condition of a **lot**.

due date: has the meaning given to it in paragraph F1(a).

estimate: the price range included in the catalogue or any saleroom notice within which we believe a **lot** may sell. **Low estimate** means the lower figure in the range and **high estimate** means the higher figure. The **mid estimate** is the midpoint between the two.

hammer price: the amount of the highest bid the auctioneer accepts for the sale of a **lot**.

Heading: has the meaning given to it in paragraph E2.

lot: an item to be offered at auction (or two or more items to be offered at auction as a group).

other damages: any special, consequential, incidental or indirect damages of any kind or any damages which fall within the meaning of 'special', 'incidental' or 'consequential' under local law.

purchase price: has the meaning given to it in paragraph F1(a).

provenance: the ownership history of a **lot**.

qualified: has the meaning given to it in paragraph E2 and **Qualified Headings** means the section headed **Qualified Headings** on the page of the catalogue headed 'Important Notices and Explanation of Cataloguing Practice'.

reserve: the confidential amount below which we will not sell a **lot**.

saleroom notice: a written notice posted next to the **lot** in the saleroom and on www.christies.com, which is also read to prospective telephone bidders and notified to clients who have left commission bids, or an announcement made by the auctioneer either at the beginning of the sale, or before a particular **lot** is auctioned.

UPPER CASE type: means having all capital letters.

warranty: a statement or representation in which the person making it guarantees that the facts set out in it are correct.

VAT SYMBOLS AND EXPLANATION

You can find a glossary explaining the meanings of words coloured in bold on this page at the end of the section of the catalogue headed 'Conditions of Sale'

VAT payable

Symbol	
No Symbol	We will use the VAT Margin Scheme. No VAT will be charged on the hammer price . VAT at 20% will be added to the buyer's premium but will not be shown separately on our invoice.
†	We will invoice under standard VAT rules and VAT will be charged at 20% on both the hammer price and buyer's premium and shown separately on our invoice.
θ	For qualifying books only, no VAT is payable on the hammer price or the buyer's premium .
*	These lots have been imported from outside the EU for sale and placed under the Temporary Admission regime. Import VAT is payable at 5% on the hammer price . VAT at 20% will be added to the buyer's premium but will not be shown separately on our invoice.
Ω	These lots have been imported from outside the EU for sale and placed under the Temporary Admission regime. Customs Duty as applicable will be added to the hammer price and Import VAT at 20% will be charged on the Duty Inclusive hammer price . VAT at 20% will be added to the buyer's premium but will not be shown separately on our invoice.
α	The VAT treatment will depend on whether you have registered to bid with an EU or non-EU address: <ul style="list-style-type: none"> If you register to bid with an address within the EU you will be invoiced under the VAT Margin Scheme (see No Symbol above). If you register to bid with an address outside of the EU you will be invoiced under standard VAT rules (see † symbol above)
‡	For wine offered 'in bond' only. If you choose to buy the wine in bond no Excise Duty or Clearance VAT will be charged on the hammer . If you choose to buy the wine out of bond Excise Duty as applicable will be added to the hammer price and Clearance VAT at 20% will be charged on the Duty inclusive hammer price . Whether you buy the wine in bond or out of bond, 20% VAT will be added to the buyer's premium and shown on the invoice.

VAT refunds: what can I reclaim?

If you are:

A non VAT registered UK or EU buyer		No VAT refund is possible
UK VAT registered buyer	No symbol and α	The VAT amount in the buyer's premium cannot be refunded. However, on request we can re-invoice you outside of the VAT Margin Scheme under normal UK VAT rules (as if the lot had been sold with a † symbol). Subject to HMRC's rules, you can then reclaim the VAT charged through your own VAT return.
	* and Ω	Subject to HMRC's rules, you can reclaim the Import VAT charged on the hammer price through your own VAT return when you are in receipt of a C79 form issued by HMRC. The VAT amount in the buyer's premium is invoiced under Margin Scheme rules so cannot normally be claimed back. However, if you request to be re-invoiced outside of the Margin Scheme under standard VAT rules (as if the lot had been sold with a † symbol) then, subject to HMRC's rules, you can reclaim the VAT charged through your own VAT return.
EU VAT registered buyer	No Symbol and α	The VAT amount in the buyer's premium cannot be refunded. However, on request we can re-invoice you outside of the VAT Margin Scheme under normal UK VAT rules (as if the lot had been sold with a † symbol). See below for the rules that would then apply.
	†	If you provide us with your EU VAT number we will not charge VAT on the buyer's premium . We will also refund the VAT on the hammer price if you ship the lot from the UK and provide us with proof of shipping, within three months of collection.
	* and Ω	The VAT amount on the hammer and in the buyer's premium cannot be refunded. However, on request we can re-invoice you outside of the VAT Margin Scheme under normal UK VAT rules (as if the lot had been sold with a † symbol). See above for the rules that would then apply.
Non EU buyer		If you meet ALL of the conditions in notes 1 to 3 below we will refund the following tax charges:
	No Symbol	We will refund the VAT amount in the buyer's premium .
	† and α	We will refund the VAT charged on the hammer price . VAT on the buyer's premium can only be refunded if you are an overseas business. The VAT amount in the buyer's premium cannot be refunded to non-trade clients.
	‡ (wine only)	No Excise Duty or Clearance VAT will be charged on the hammer price providing you export the wine while 'in bond' directly outside the EU using an Excise authorised shipper. VAT on the buyer's premium can only be refunded if you are an overseas business. The VAT amount in the buyer's premium cannot be refunded to non-trade clients.
	* and Ω	We will refund the Import VAT charged on the hammer price and the VAT amount in the buyer's premium .

1. We **CANNOT** offer refunds of VAT amounts or Import VAT to buyers who do not meet all applicable conditions in full. If you are unsure whether you will be entitled to a refund, please contact Client Services at the address below **before you bid**.
2. No VAT amounts or Import VAT will be refunded where the total refund is under £100.
3. In order to receive a refund of VAT amounts/Import VAT (as applicable) non-EU buyers must:

(a) have registered to bid with an address outside of the EU; **and**
(b) provide immediate proof of correct export out of the EU within the required time frames of: 30 days via a 'controlled export' for * and Ω **lots**. All other **lots** must be exported within three months of collection.
4. Details of the documents which you must provide to us to show satisfactory proof of export/shipping are available from our VAT team at the address below.

We charge a processing fee of £35.00 per invoice to check shipping/export documents. We will waive this processing fee if you appoint Christie's Shipping Department to arrange your export/shipping.
5. If you appoint Christie's Art Transport or one of our authorised shippers to arrange your export/shipping we will issue you with an export invoice with the applicable VAT or duties cancelled as outlined above. If you later cancel or change the shipment

in a manner that infringes the rules outlined above we will issue a revised invoice charging you all applicable taxes/charges.
6. If you ask us to re-invoice you under normal UK VAT rules (as if the **lot** had been sold with a † symbol) instead of the Margin Scheme the **lot** may become ineligible to be resold using the Margin Schemes. You should take professional advice if you are unsure how this may affect you.

7. All re-invoicing requests must be received within four years from the date of sale.
If you have any questions about VAT refunds please contact Christie's Client Services on info@christies.com
Tel: +44 (0)20 7389 2886.
Fax: +44 (0)20 7839 1611.

SYMBOLS USED IN THIS CATALOGUE

The meaning of words coloured in **bold** in this section can be found at the end of the section of the catalogue headed 'Conditions of Sale'.

- Christie's has a direct financial interest in the **lot**. See Important Notices and Explanation of Cataloguing Practice.
- △ Owned by Christie's or another **Christie's Group** company in whole or in part. See Important Notices and Explanation of Cataloguing Practice.
- ◆ Christie's has a direct financial interest in the **lot** and has funded all or part of our interest with the help of someone else. See Important Notices and Explanation of Cataloguing Practice.

- λ Artist's Resale Right. See Section D3 of the Conditions of Sale.
- **Lot** offered without **reserve** which will be sold to the highest bidder regardless of the pre-sale estimate in the catalogue.
- ~ **Lot** incorporates material from endangered species which could result in export restrictions. See Section H2(b) of the Conditions of Sale.

- ψ **Lot** containing jadeite and rubies from Burma or of indeterminate origin. See Section H2(d) of the Conditions of Sale.
- ?, *, Ω, α, #, ‡ See VAT Symbols and Explanation.
- See Storage and Collection Pages on South Kensington sales only.

Please note that **lots** are marked as a convenience to you and we shall not be liable for any errors in, or failure to, mark a **lot**.

IMPORTANT NOTICES AND EXPLANATION OF CATALOGUING PRACTICE

IMPORTANT NOTICE

CHRISTIE'S INTEREST IN PROPERTY CONSIGNED FOR AUCTION

△ **Property Owned in part or in full by Christie's**
From time to time, Christie's may offer a **lot** which it owns in whole or in part. Such property is identified in the catalogue with the symbol △ next to its **lot** number.

◦ **Minimum Price Guarantees**

On occasion, Christie's has a direct financial interest in the outcome of the sale of certain lots consigned for sale. This will usually be where it has guaranteed to the Seller that whatever the outcome of the auction, the Seller will receive a minimum sale price for the work. This is known as a minimum price guarantee. Where Christie's holds such financial interest we identify such **lots** with the symbol ◦ next to the **lot** number.

◦ **Third Party Guarantees/Irrevocable bids**

Where Christie's has provided a Minimum Price Guarantee it is at risk of making a loss, which can be significant, if the **lot** fails to sell. Christie's therefore sometimes chooses to share that risk with a third party. In such cases the third party agrees prior to the auction to place an irrevocable written bid on the **lot**. The third party is therefore committed to bidding on the **lot** and, even if there are no other bids, buying the **lot** at the level of the written bid unless there are any higher bids. In doing so, the third party takes on all or part of the risk of the **lot** not being sold. If the **lot** is not sold, the third party may incur a loss. **Lots** which are subject to a third party guarantee arrangement are identified in the catalogue with the symbol ◦.

The third party will be remunerated in exchange for accepting this risk based on a fixed fee if the third party is the successful bidder or on the final hammer price in the event that the third party is not the successful bidder. The third party may also bid for the **lot** above the written bid. Where it does so, and is the successful bidder, the fixed fee for taking on the guarantee risk may be netted against the final **purchase price**.

Third party guarantors are required by us to disclose to anyone they are advising their financial interest in any **lots** they are guaranteeing. However, for the avoidance of any doubt, if you are advised by or bidding through an agent on a **lot** identified as being subject to a third party guarantee you should always ask your agent to confirm whether or not he or she has a financial interest in relation to the **lot**.

Other Arrangements

Christie's may enter into other arrangements not involving bids. These include arrangements where Christie's has given the Seller an Advance on the proceeds of sale of the **lot** or where Christie's has shared the risk of a guarantee with a partner without the partner being required to place an irrevocable written bid or otherwise participating in the bidding on the **lot**. Because such arrangements are unrelated to the bidding process they are not marked with a symbol in the catalogue.

Bidding by parties with an interest

In any case where a party has a financial interest in a **lot** and intends to bid on it we will make a saleroom announcement to ensure that all bidders are aware of this. Such financial interests can include where beneficiaries of an Estate have reserved the right to bid on a **lot** consigned by the Estate or where a partner in a risk-sharing arrangement has reserved the right to bid on a **lot** and/or notified us of their intention to bid.

Please see <http://www.christies.com/financial-interest/> for a more detailed explanation of minimum price guarantees and third party financing arrangements.

Where Christie's has an ownership or financial interest in every lot in the catalogue, Christie's will not designate each lot with a symbol, but will state its interest in the front of the catalogue.

EXPLANATION OF CATALOGUING PRACTICE

Terms referred to in paragraph 2 are as follows:-

A work catalogued with the name(s) or recognised designation of an artist, without any qualification, is, in our opinion, a work by the artist.

In other cases, the following expressions, with the following meanings are used:

"Attributed to ..."

in our opinion probably a work by the artist in whole or in part.

"Studio of ..."

"Workshop of ..."

in our opinion a work executed in the studio or workshop of the artist, possibly under his supervision.

"Circle of ..."

in our opinion a work of the period of the artist and showing his influence.

"Follower of ..."

in our opinion a work executed in the artist's style but not necessarily by a pupil.

"Manner of ..."

in our opinion a work executed in the artist's style but of a later date.

"After ..."

in our opinion a copy (of any date) of a work of the artist.

"Signed ..."

"Dated ..."

"Inscribed ..."

in our opinion the work has been signed/dated/inscribed by the artist. The addition of a question mark indicates an element of doubt.

"With signature ..."

"With date ..."

"With inscription ..."

in our opinion the signature/date/inscription/stamp is by a hand other than that of the artist.

REFERENCE NUMBERS

Where applicable, the numbers which accompany the title of each lot refer to the catalogue raisonné compiled by Felix Marcihaac 'R. Lalique. oeuvre de Verre' (Paris 1994).

WORLDWIDE SALEROOMS AND OFFICES

ARGENTINA

BUENOS AIRES

+54 11 43 93 42 22
Cristina Carlisle

AUSTRALIA

SYDNEY

+61 (0)2 9326 1422
Ronan Sulich

AUSTRIA

VIENNA

+43 (0)1 533 881214
Angela Baillou

BELGIUM

BRUSSELS

+32 (0)2 512 88 30
Roland de Lathuy

BERMUDA

BERMUDA

+1 401 849 9222
Betsy Ray

BRAZIL

RIO DE JANEIRO

+5521 2225 6553
Candida Sodre

SÃO PAULO

+5511 3061 2576
Nathalie Lenci

CANADA

TORONTO

+1 416 960 2063
Brett Sherlock

CHILE

SANTIAGO

+56 2 2 2631642
Denise Ratinoff
de Lira

COLOMBIA

BOGOTA

+571 635 54 00
Juanita Madrinan

DENMARK

COPENHAGEN

+45 3962 2377
Birgitta Hillingsø
(Consultant)
+45 2612 0092
Rikke Juel Brandt
(Consultant)

FINLAND AND THE BALTIC STATES

HELSINKI

+358 40 5837945
Barbro Schauman
(Consultant)

FRANCE

BRITTANY AND THE LOIRE VALLEY

+33 (0)6 09 44 90 78
Virginie Gregory
(Consultant)

GREATER EASTERN FRANCE

+33 (0)6 07 16 34 25
Jean-Louis Janin
Daviet (Consultant)

NORD-PAS DE CALAIS

+33 (0)6 09 63 21 02
Jean-Louis Brémilts
(Consultant)

•PARIS

+33 (0)1 40 76 85 85
Poitou-Charente
Aquitaine

+33 (0)5 56 81 65 47
Marie-Cécile Moueix

PROVENCE - ALPES CÔTE D'AZUR

+33 (0)6 71 99 97 67
Fabienne Albertini-
Cohen

RHÔNE ALPES

+33 (0)6 61 81 82 53
Dominique Pierron
(Consultant)

GERMANY

DÜSSELDORF

+49 (0)21 14 91 59 352
Arno Verkade

FRANKFURT

+49 (0)173 317 3975
Anja Schaller
(Consultant)

HAMBURG

+49 (0)40 27 94 073
Christiane Gräfin
zu Rantzau

MUNICH

+49 (0)89 24 20 96 80
Marie Christine Gräfin
Huyn

STUTTGART

+49 (0)71 12 26 96 99
Eva Susanne
Schweizer

INDIA

•MUMBAI

+91 (22) 2280 7905
Sonal Singh

DELHI

+91 (011) 6609 1170
Sanjay Sharma

INDONESIA

JAKARTA

+62 (0)21 7278 6268
Charmie Hamami

ISRAEL

TEL AVIV

+972 (0)3 695 0695
Roni Gilat-Baharaff

ITALY

•MILAN

+39 02 303 2831

ROME

+39 06 686 3333
Marina Cicogna

JAPAN

TOKYO

+81 (0)3 6267 1766
Chie Banta

MALAYSIA

KUALA LUMPUR

+60 3 6207 9230
Lim Meng Hong

MEXICO

MEXICO CITY

+52 55 5281 5546
Gabriela Lobo

MONACO

+377 97 97 11 00
Nancy Dotta

THE NETHERLANDS

•AMSTERDAM

+31 (0)20 57 55 255

NORWAY

OSLO

+47 975 800 78
Katinka Traaseth
(Consultant)

PEOPLES REPUBLIC OF CHINA

BEIJING

+86 (0)10 8572 7900
Jinqing Cai

•HONG KONG

+852 2760 1766

•SHANGHAI

+86 (0)21 6355 1766
Gwenn Delamaire

PORTUGAL

LISBON

+351 919 317 233
Mafalda Pereira
Coutinho
(Consultant)

• DENOTES SALEROOM

ENQUIRIES?— Call the Saleroom or Office

EMAIL— info@christies.com

02/09/15

RUSSIA**MOSCOW**

+7 495 937 6364
 +44 20 7389 2318
 Katya Vinokurova

SINGAPORE**SINGAPORE**

+65 6735 1766
 Wen Li Tang

SOUTH AFRICA**CAPE TOWN**

+27 (21) 761 2676
 Juliet Lomborg
 (Independent
 Consultant)

**DURBAN &
JOHANNESBURG**

+27 (31) 207 8247
 Gillian Scott-Berning
 (Independent
 Consultant)

WESTERN CAPE

+27 (44) 533 5178
 Annabelle
 Conyngham
 (Independent
 Consultant)

SOUTH KOREA**SEOUL**

+82 2 720 5266
 Hye-Kyung Bae

SPAIN**BARCELONA**

+34 (0)93 487 8259
 Carmen Schjaer

MADRID

+34 (0)91 532 6626
 Juan Varez
 Dalia Padilla

SWEDEN**STOCKHOLM**

+46 (0)70 5368 166
 Marie Boettiger
 Kleman (Consultant)
 +46 (0)70 9369 201
 Louise Dyhlén
 (Consultant)

SWITZERLAND**•GENEVA**

+41 (0)22 319 1766
 Eveline de Proyart

•ZURICH

+41 (0)44 268 1010
 Dr. Bertold Mueller

TAIWAN**TAIPEI**

+886 2 2736 3356
 Ada Ong

THAILAND**BANGKOK**

+66 (0)2 652 1097
 Yaovanee Nirandara
 Punchalee Phenjati

TURKEY**ISTANBUL**

+90 (532) 558 7514
 Eda Kehale Argün
 (Consultant)

UNITED ARAB**EMIRATES****•DUBAI**

+971 (0)4 425 5647

UNITED KINGDOM**•LONDON,
KING STREET**

+44 (0)20 7839 9060

**•LONDON,
SOUTH KENSINGTON**

+44 (0)20 7930 6074

**NORTH AND
NORTHEAST**

+44 (0)20 3219 6010
 Thomas Scott

**NORTHWEST
AND WALES**

+44 (0)20 7752 3033
 Jane Blood

SOUTH

+44 (0)1730 814 300
 Mark Wrey

SCOTLAND

+44 (0)131 225 4756
 Bernard Williams
 Robert Lagneau
 David Bowes-Lyon
 (Consultant)

ISLE OF MAN

+44 (0)20 7389 2032

CHANNEL ISLANDS

+44 (0)1534 485 988
 Melissa Bonn
 (Consultant)

IRELAND

+353 (0)59 86 24996
 Christine Ryall
 (Consultant)

UNITED STATES**BOSTON**

+1 617 536 6000
 Elizabeth M. Chapin

CHICAGO

+1 312 787 2765
 Lisa Cavanaugh

DALLAS

+1 214 599 0735
 Capera Ryan

HOUSTON

+1 713 802 0191
 Jessica Phifer

LOS ANGELES

+1 310 385 2600

MIAMI

+1 305 445 1487
 Jessica Katz

NEWPORT

+1 401 849 9222
 Betsy D. Ray

•NEW YORK

+1 212 636 2000

PALM BEACH

+1 561 833 6952
 Maura Smith

PHILADELPHIA

+1 610 520 1590
 Christie Lebrano

SAN FRANCISCO

+1 415 982 0982
 Ellanor Notides

CHRISTIE'S SPECIALIST DEPARTMENTS AND SERVICES

KEY TO ABBREVIATIONS:

HK: Hong Kong

KS: London, King Street

NY: New York, Rockefeller Plaza

PAR: Paris

SK: London, South Kensington

DEPARTMENTS

AFRICAN AND OCEANIC ART

PAR: +33 (0)140 768 386

AMERICAN FURNITURE

NY: +1 212 636 2230

AMERICAN INDIAN ART

NY: +1 212 606 0536

AMERICAN PICTURES

NY: +1 212 636 2140

ANGLO-INDIAN ART

KS: +44 (0)20 7389 2570

ANTIQUITIES

SK: +44 (0)20 7752 3219

ARMS AND ARMOUR

SK: +44 (0)20 7752 3119

ASIAN 20TH CENTURY AND CONTEMPORARY ART

NY: +1 212 468 7133

AUSTRALIAN PICTURES

KS: +44 (0)20 7389 2040

BOOKS AND MANUSCRIPTS

KS: +44 (0)20 7389 2674

SK: +44 (0)20 7752 3203

BRITISH & IRISH ART

KS: +44 (0)20 7389 2682

NY: +1 212 636 2084

SK: +44 (0)20 7752 3257

BRITISH ART ON PAPER

KS: +44 (0)20 7389 2278

SK: +44 (0)20 7752 3293

NY: +1 212 636 2085

BRITISH PICTURES 1500-1850

KS: +44 (0)20 7389 2945

CARPETS

KS: +44 (0)20 7389 2035

SK: +44 (0)20 7389 2776

CHINESE WORKS OF ART

KS: +44 (0)20 7389 2577

SK: +44 (0)20 7752 3239

CLOCKS

KS: +44 (0)20 7389 2357

CONTEMPORARY ART

KS: +44 (0)20 7389 2446

SK: +44 (0)20 7389 2502

COSTUME, TEXTILES AND FANS

SK: +44 (0)20 7752 3215

EUROPEAN CERAMICS AND GLASS

SK: +44 (0)20 7752 3026

FURNITURE

KS: +44 (0)20 7389 2482

SK: +44 (0)20 7389 2791

HANDBAGS & ACCESSORIES

PAR: +33 (0)1 40 76 7249

IMPRESSIONIST PICTURES

KS: +44 (0)20 7389 2638

SK: +44 (0)20 7752 3218

INDIAN CONTEMPORARY ART

KS: +44 (0)20 7389 2700

NY: +1 212 636 2189

INTERIORS

SK: +44 (0)20 7389 2236

NY: +1 212 636 2032

ISLAMIC WORKS OF ART

KS: +44 (0)20 7389 2372

SK: +44 (0)20 7752 3239

JAPANESE WORKS OF ART

KS: +44 (0)20 7389 2591

SK: +44 (0)20 7752 3239

JEWELLERY

KS: +44 (0)20 7389 2383

SK: +44 (0)20 7752 3265

LATIN AMERICAN ART

NY: +1 212 636 2150

MARITIME PICTURES

SK: +44 (0)20 7752 3284

NY: +1 212 707 5949

MINIATURES

KS: +44 (0)20 7389 2650

MODERN DESIGN

SK: +44 (0)20 7389 2142

MUSICAL INSTRUMENTS

SK: +44 (0)20 7752 3365

NINETEENTH CENTURY FURNITURE AND SCULPTURE

KS: +44 (0)20 7389 2699

NINETEENTH CENTURY EUROPEAN PICTURES

KS: +44 (0)20 7389 2443

SK: +44 (0)20 7752 3309

OBJECTS OF VERTU

KS: +44 (0)20 7389 2347

SK: +44 (0)20 7752 3001

OLD MASTER DRAWINGS

KS: +44 (0)20 7389 2251

OLD MASTER PICTURES

KS: +44 (0)20 7389 2531

SK: +44 (0)20 7752 3250

ORIENTAL CERAMICS AND WORKS OF ART

SK: +44 (0)20 7752 3235

PHOTOGRAPHS

KS: +44 (0)20 7752 3083

POPULAR CULTURE AND ENTERTAINMENT

SK: +44 (0)20 7752 3275

POST-WAR ART

KS: +44 (0)20 7389 2446

SK: +44 (0)20 7389 2502

POSTERS

SK: +44 (0)20 7752 3208

PRINTS

KS: +44 (0)20 7389 2328

SK: +44 (0)20 7752 3109

PRIVATE COLLECTIONS AND COUNTRY HOUSE SALES

KS: +44 (0)20 7389 2343

RUSSIAN WORKS OF ART

KS: +44 (0)20 7389 2057

TRAVEL, SCIENCE AND NATURAL HISTORY

SK: +44 (0)20 7752 3291

SCULPTURE

KS: +44 (0)20 7389 2331

SK: +44 (0)20 7389 2794

SILVER

KS: +44 (0)20 7389 2666

SK: +44 (0)20 7752 3262

SWISS ART

ZUR: +41 (0) 44 268

1012

TOPOGRAPHICAL PICTURES

KS: +44 (0)20 7389 2040

SK: +44 (0)20 7752 3291

TWENTIETH CENTURY BRITISH ART

KS: +44 (0)20 7389 2684

SK: +44 (0)20 7752 3311

TWENTIETH CENTURY DECORATIVE ART & DESIGN

KS: +44 (0)20 7389 2140

SK: +44 (0)20 7752 3236

TWENTIETH CENTURY PICTURES

SK: +44 (0)20 7752 3218

VICTORIAN PICTURES

KS: +44 (0)20 7389 2468

SK: +44 (0)20 7752 3257

WATERCOLOURS AND DRAWINGS

KS: +44 (0)20 7389 2257

SK: +44 (0)20 7752 3293

WINE

KS: +44 (0)20 7752 3366

AUCTION SERVICES

CORPORATE COLLECTIONS

Tel: +44 (0)20 7389 2548

Email: norchard@

christies.com

FINANCIAL SERVICES

Tel: +44 (0)20 7389 2624

Fax: +44 (0)20 7389

2204

HERITAGE AND TAXATION

Tel: +44 (0)20 7389 2101

Fax: +44 (0)20 7389

2300

Email: rcornett@

christies.com

PRIVATE COLLECTIONS AND COUNTRY HOUSE SALES

Tel: +44 (0)20 7389 2343

Fax: +44 (0)20 7389

2225

Email: awaters@christies.

com

MUSEUM SERVICES, UK

Tel: +44 (0)20 7389 2570

Email: llindsay@christies.

com

PRIVATE SALES

US: +1 212 636 2034

Fax: +1 212 636 2035

Valuations

Tel: +44 (0)20 7389 2464

Fax: +44 (0)20 7389

2038

Email: mwrey@christies.

com

OTHER SERVICES

CHRISTIE'S EDUCATION

LONDON

Tel: +44 (0)20 7665 4350

Fax: +44 (0)20 7665

4351

Email: london@christies.

edu

NEW YORK

Tel: +1 212 355 1501

Fax: +1 212 355 7370

Email: newyork@

christies.edu

HONG KONG

Tel: +852 2978 6747

Fax: +852 2525 3856

Email: hongkong@

christies.edu

CHRISTIE'S FINE ART STORAGE SERVICES

NEW YORK

+1 212 974 4570

newyork@cfass.com

SINGAPORE

Tel: +65 6543 5252

Email: singapore@cfass.

com

CHRISTIE'S INTERNATIONAL REAL ESTATE

NEW YORK

Tel +1 212 468 7182

Fax +1 212 468 7141

info@christiesrealestate.com

LONDON

Tel +44 20 7389 2551

Fax +44 20 7389 2168

info@christiesrealestate.com

HONG KONG

Tel +852 2978 6788

Fax +852 2973 0799

info@christiesrealestate.com

KEY TO ABBREVIATIONS

KS:

London, King Street

NY:

New York, Rockefeller Plaza

PAR:

Paris

SK:

London, South Kensington

GUSTAVE LE GRAY (1820-1884)

La vague brisée - Cette - Mer Méditerranée, 1857

albumen print from collodion glass negative, mounted on original board

facsimile signature in red ink (recto); annotated 'Cette' (mount, recto); numbered '10' (mount, verso)

image/sheet: 16½ x 12⅞ in. (42 x 32.7 cm.) · mount: 24⅝ x 17 in. (62.6 x 43.2 cm.)

\$150,000–250,000



Modern Visions: Exceptional Photographs

New York • 17-18 February 2016

CHRISTIE'S

Viewing

13-17 February
20 Rockefeller Plaza
New York, NY 10020

Contact

Darius Himes
dhimes@christies.com
+1 212 636 2324

christies.com



Queen Anne's Gate

Works from the Art Collection of Sting and Trudie Styler

London, King Street • 24 February 2016

Viewing

17–23 February
8 King Street
London SW1Y 6QT

Contact

Amelia Walker
awalker@christies.com
+44 (0)20 7389 2085

CHRISTIE'S

LINE VAUTRIN (1913-1997)
A 'SOLEIL A POINTES NO.3' MIRROR, CIRCA 1955
Talosel, mirror fragments • 22½ in. (56 cm.) diam.
signed *Line Vautrin* to reverse
£20,000–30,000

GABRIEL ARGY-ROUSSEAU (1885-1953)
A 'FLEUR EPANOUIE' VASE, DESIGNED 1925
pâte-de-verre · 9³/₈ in. (24.5 cm.) high
\$15,000–20,000

GABRIEL ARGY-ROUSSEAU (1885-1953)
A 'FLEURS DE PERSE' VASE, DESIGNED 1924
pâte-de-verre · 12¹/₈ in. (31 cm.) high
\$12,000–18,000

DAUM
A EWER, CIRCA 1910
wheel-carved cameo glass · 9⁷/₈ in. (25 cm.) high
\$12,000–18,000



FRENCH ART GLASS:
AN IMPORTANT NEW YORK PRIVATE COLLECTION
New York • 23 March 2016

CHRISTIE'S

Viewing
18–22 March
20 Rockefeller Plaza
New York, NY 10020

Contact
Carina Villinger
cvillinger@christies.com
+1 212 636 2240

christies.com

LALIQUE



—
LANGUEDOC

LA COLLECTION

—
lalique.com

CHRISTIE'S  LIVE™

It just got even easier to bid online

We have upgraded our service.

With live online auctions from Christie's Live™ you may find yourself giving in to temptations you could never imagine. It's a convenient way to bid in Christie's auctions worldwide, allowing you to see and hear the auctioneer in real time and giving you clear prompts throughout the whole bidding process.

Improvements:

- **access on both Mac and PC**
- **web friendly and suitable for all browsers**
- **no downloading necessary**
- **bid in multiple sales at the same time**
- **track your lots to receive up-to-date information before and after the sale**

Do you prefer to bid in the Saleroom?
Why not skip the queues by registering online for your paddle?

CHRISTIE'S
christies.com



WRITTEN BIDS FORM

CHRISTIE'S LONDON

LALIQUE

TUESDAY 9 FEBRUARY 2016 AT 2.00 PM

85 Old Brompton Road, London SW7 3LD

CODE NAME: KALEIDOSCOPE

SALE NUMBER: 12285

(Dealers billing name and address must agree with tax exemption certificate. Once issued, we cannot change the buyer's name on an invoice or re-issue the invoice in a different name.)

BID ONLINE FOR THIS SALE AT CHRISTIES.COM

BIDDING INCREMENTS

Bidding generally starts below the **low estimate** and increases in steps (bid increments) of up to 10 per cent. The auctioneer will decide where the bidding should start and the bid increments. Written bids that do not conform to the increments set below may be lowered to the next bidding interval.

UK£50 to UK £1,000	by UK£50s
UK£1,000 to UK£2,000	by UK£100s
UK£2,000 to UK£3,000	by UK£200s
UK£3,000 to UK£5,000	by UK£200, 500, 800 (eg UK£4,200, 4,500, 4,800)
UK£5,000 to UK£10,000	by UK£500s
UK£10,000 to UK£20,000	by UK£1,000s
UK£20,000 to UK£30,000	by UK£2,000s
UK£30,000 to UK£50,000	by UK£2,000, 5,000, 8,000 (eg UK£32,200, 35,000, 38,000)
UK£50,000 to UK£100,000	by UK£5,000s
UK£100,000 to UK£120,000	by UK£10,000s
Above UK£200,000	at auctioneer's discretion

The auctioneer may vary the increments during the course of the auction at his or her own discretion.

- I request Christie's to bid on the stated **lots** up to the maximum bid I have indicated for each **lot**.
- I understand that if my bid is successful, the amount payable will be the sum of the **hammer price** and the **buyer's premium** (together with any taxes chargeable on the **hammer price** and **buyer's premium** and any applicable Artist's Resale Royalty in accordance with the Conditions of Sale - Buyer's Agreement). The **buyer's premium** rate shall be an amount equal to 25% of the **hammer price** of each **lot** up to and including £50,000, 20% on any amount over £50,000 up to and including £1,000,000 and 12% of the amount above £1,000,000. For wine and cigars there is a flat rate of 17.5% of the **hammer price** of each **lot** sold.
- I agree to be bound by the Conditions of Sale printed in the catalogue.
- I understand that if Christie's receive written bids on a **lot** for identical amounts and at the auction these are the highest bids on the **lot**, Christie's will sell the **lot** to the bidder whose written bid it received and accepted first.
- Written bids submitted on 'no reserve' **lots** will, in the absence of a higher bid, be executed at approximately 50% of the **low estimate** or at the amount of the bid if it is less than 50% of the **low estimate**.

I understand that Christie's written bid service is a free service provided for clients and that, while Christie's will be as careful as it reasonably can be, Christie's will not be liable for any problems with this service or loss or damage arising from circumstances beyond Christie's reasonable control.

Auction Results: +44 (0)20 7839 9060

WRITTEN BIDS MUST BE RECEIVED AT LEAST 24 HOURS BEFORE THE AUCTION BEGINS.

CHRISTIE'S WILL CONFIRM ALL BIDS RECEIVED BY FAX BY RETURN FAX. IF YOU HAVE NOT RECEIVED CONFIRMATION WITHIN ONE BUSINESS DAY, PLEASE CONTACT THE BID DEPARTMENT: TEL: +44 (0)20 7752 3225 • FAX: +44 (0)20 7581 1403 • ON-LINE WWW.CHRISTIES.COM

12285

Client Number (if applicable) Sale Number

Billing Name (please print)

Address

Postcode

Daytime Telephone Evening Telephone

Fax (Important) E-mail

Please tick if you prefer not to receive information about our upcoming sales by e-mail

I have read and understood this written bid form and the Conditions of Sale - Buyer's Agreement

Signature

If you have not previously bid or consigned with Christie's, please attach copies of the following documents. Individuals: government-issued photo identification (such as a driving licence, national identity card, or passport) and, if not shown on the ID document, proof of current address, for example a utility bill or bank statement. Corporate clients: a certificate of incorporation. Other business structures such as trusts, offshore companies or partnerships: please contact the Compliance Department at +44 (0)20 7839 9060 for advice on the information you should supply. If you are registering to bid on behalf of someone who has not previously bid or consigned with Christie's, please attach identification documents for yourself as well as the party on whose behalf you are bidding, together with a signed letter of authorisation from that party. New clients, clients who have not made a purchase from any Christie's office within the last two years, and those wishing to spend more than on previous occasions will be asked to supply a bank reference. We also request that you complete the section below with your bank details:

Name of Bank(s)

Address of Bank(s)

Account Number(s)

Name of Account Officer(s)

Bank Telephone Number

PLEASE PRINT CLEARLY

Lot number (in numerical order)	Maximum Bid \$ (excluding buyer's premium)	Lot number (in numerical order)	Maximum Bid \$ (excluding buyer's premium)

If you are registered within the European Community for VAT/IVA/TVA/BTW/MWST/MOMS Please quote number below:

CATALOGUE SUBSCRIPTIONS

EXPERT KNOWLEDGE BEAUTIFULLY PRESENTED

20/21 DESIGN

A range of property including furniture, lighting, ceramics and sculpture from the Art Nouveau, Arts and Crafts, Art Deco, Modernist and Contemporary Movements.



Code	Subscription Title	Location	Issues	UK£Price	US\$Price	EURPrice
	20/21 Design					
L53	20/21 Design	King Street	2	38	61	57
N53	20/21 Design	New York	4	95	152	144
P53	20/21 Design	Paris	2	38	61	57
K126	Lalique Glass	South Kensington	2	27	44	40

CHRISTIE'S

WWW.CHRISTIES.COM/SHOP

Photographs, Posters and Prints · Impressionist and Modern Art
Jewellery, Watches and Wine · Antiquities and Tribal Art
Asian and Islamic Art · Russian Art
Furniture, Decorative Arts and Collectables · American Art and Furniture
Books, Travel and Science · Design, Costume and Memorabilia
Post-War and Contemporary Art
Old Master Paintings and 19th Century Paintings

CHRISTIE'S

CHRISTIE'S INTERNATIONAL PLC

Patricia Barbizet, Chairwoman and CEO
Jussi Pyllkkänen, Global President
Stephen Brooks, Deputy CEO
Loïc Brivezac, Gilles Erulin, Gilles Pagniez,
Héloïse Temple-Boyer,
Sophie Carter, Company Secretary

CHRISTIE'S EXECUTIVE

Patricia Barbizet, Chairwoman and CEO
Jussi Pyllkkänen, Global President
Stephen Brooks, Deputy CEO

INTERNATIONAL CHAIRMEN

François Curiel, Chairman, Asia Pacific
Stephen Lash, Chairman Emeritus, Americas
Viscount Linley, Honorary Chairman, EMERI
Charles Cator, Deputy Chairman, Christie's Int.
Xin Li, Deputy Chairwoman, Christie's Int.

CHRISTIE'S EMERI

SENIOR DIRECTORS

Mariolina Bassetti, Giovanna Bertazzoni,
Edouard Boccon-Gibod, Prof. Dr. Dirk Boll,
Olivier Camu, Roland de Lathuy,
Eveline de Proyart, Philippe Garner,
Roni Gilat-Baharaff, Francis Outred,
Christiane Rantzaou, Andreas Rumbler,
François de Ricqlès, Jop Ubbens, Juan Varez

ADVISORY BOARD

Pedro Girao, Chairman,
Patricia Barbizet, Arpad Busson, Loula Chandris,
Kemal Has Cingillioglu, Ginevra Elkann,
I. D. Fürstin zu Fürstenberg, Laurence Graff,
H.R.H. Prince Pavlos of Greece, Marque
sa de Bellavista Mrs Alicia Koplowitz,
Viscount Linley, Robert Manoukian,
Rosita, Duchess of Marlborough, Countess
Daniela Memmo d'Amelio,
Usha Mittal, Çiğdem Simavi

CHRISTIE'S UK

CHAIRMAN'S OFFICE

Orlando Rock, Chairman
Noël Annesley, Honorary Chairman;
Richard Roundell, Vice Chairman;
Robert Copley, Deputy Chairman;
The Earl of Halifax, Deputy Chairman;
Francis Russell, Deputy Chairman;
Julia Delves Broughton, James Hervey-Bathurst,
Amin Jaffer, Nicholas White, Mark Wrey

SENIOR DIRECTORS

Dina Amin, Simon Andrews, Daniel Baade,
Philip Belcher, Jeremy Bentley, Ellen Berkeley,
Jill Berry, Peter Brown, James Bruce-Gardyne,
Sophie Carter, Benjamin Clark,
Christopher Clayton-Jones, Karen Cole,
Isabelle de La Bruyere, Leila de Vos,
Nicole Dembinska, Paul Dickinson,
Harriet Drummond, Julie Edelson,
Hugh Edmeades, David Elswood, David Findlay,
Margaret Ford, Daniel Gallen, Karen Harkness,
Philip Harley, James Hastie, Karl Hermanns,
Paul Hewitt, Rachel Hilderley, Mark Hinton,
Nick Hough, Michael Jeha, Donald Johnston,
Erem Kassim-Lakha, Nicholas Lambourn,
William Lorimer, Catherine Manson,
Nic McElhatton (Chairman, South Kensington),
Alexandra McMorrough, Jeremy Morrison,
Nicholas Orchard, Clarice Pecori-Giraldi,
Benjamin Peronnet, Henry Pettifer, Steve Phipps,
Will Porter, Paul Reason, Tara Rastrick,
Amjad Rauf, William Robinson, John Stainton,
Alexis de Tiesenhausen, Lynne Turner, Jay Vincze,
Andrew Ward, David Warren, Andrew Waters,
Harry Williams-Bulkeley, Martin Wilson,
André Zlattinger

DIRECTORS

Richard Addington, Zoe Ainscough,
Georgiana Aitken, Marco Almeida, Maddie Amos,
Alexandra Baker, Helen Baker, Karl Barry,
Rachel Beattie, Sven Becker, Jane Blood,
Piers Boothman, David Bowes-Lyon,
Anthony Brown, Lucy Brown, Robert Brown,
Lucy Campbell, Jason Carey, Sarah Charles,
Romilly Collins, Ruth Cornett, Nicky Crosbie,
Armelle de Laubier-Rhally, Sophie DuCret,
Anna Evans, Arne Evervijn, Adele Falconer,
Nick Finch, Emily Fisher, Peter Flory,
Elizabeth Floyd, Christopher Forrest, Giles Forster,
Zita Gibson, Alexandra Gill, Sebastian Goetz,
Simon Green, David Gregory, Mathilde Heaton,
Annabel Hesketh, Sydney Hornsby,
Peter Horwood, Kate Hunt, Simon James,
Sabine Kegel, Hans-Peter Keller, Tjabel Klok,
Robert Lagneau, Joanna Langston, Tina Law,
Darren Leak, Adriana Leese, Brandon Lindberg,
Laura Lindsay, David Llewellyn, Murray Macaulay,
Sarah Mansfield, Nicolas Martineau,
Roger Massey, Joy McCall, Neil McCutcheon,
Daniel McPherson, Neil Millen, Edward Monagle,

Jeremy Morgan, Leonie Moschner, Giles Mountain,
Chris Munro, Rupert Neelands, Liberte Nuti,
Beatriz Ordoval, Rosalind Patient, Anthea Peers,
Keith Penton, Romain Pingannaud, Sara Plumbly,
Caroline Porter, Anne Qaimmaqami,
Marcus Rådecke, Pedram Rasti, Sumiko Roberts,
Sandra Romito, Tom Rooth, Alice de Roquemaurel,
Francois Rothlisberger, Patrick Saich,
Tim Schmelcher, Rosemary Scott, Tom Scott,
Nigel Shorthouse, Dominic Simpson, Nick Sims,
Clementine Sinclair, Sonal Singh, Katie Siveyer,
Nicola Steel, Kay Sutton, Cornelia Svedman,
Rakhi Talwar, Nicolette Tomkinson,
Thomas Venning, Ekaterina Vinokurova, Edwin Vos,
Amelia Walker, Sophie Wiles, Bernard Williams,
Georgina Wilkenach, Toby Woolley, Geoff Young

ASSOCIATE DIRECTORS

Guy Agazarian, Cristian Albu, Jennie Amos,
Ksenia Apukhtina, Katharine Arnold,
Alexis Ashot, Fiona Baker, Carin Baur,
Sarah Boswell, Mark Bowis, Phill Brakefield,
Clare Bramwell, Jenny Brown, John Caudle,
Marie-Louise Chaldecott, Sophie Churcher,
John Crook, Helen Culver Smith, Laetitia Delaloye,
Charlotte Delaney, Freddie De Rougemont,
Grant Deudney, Eva-Maria Dimitriadis,
Howard Dixon, Eugenio Donadoni,
Virginie Dulucq, Joe Dunning, David Ellis,
Antonia Essex, Kate Flitcroft, Nina Foote,
Eva French, Pat Galligan, Keith Gill,
Andrew Grainger, Leonie Grainger, Julia Grant,
Pippa Green, Angus Granlund, Christine Haines,
Coral Hall, Charlotte Hart, Daniel Hawkins,
Evelyn Heathcoat Amory, Anke Held,
Valerie Hess, Adam Hogg, Carolyn Holmes,
Amy Huitson, Adrian Hume-Sayer, James Hyslop,
Helena Ingham, Pippa Jacomb, Guady Kelly,
Hala Khayat, Alexandra Kindermann,
Polly Knewstubb, Mark Henry Lampé, Tom Legh,
Timothy Lloyd, Graeme Maddison, Peter Mansell,
Stephanie Manstein, Amparo Martinez Rusotto,
Astrid Mascher, David McLachlan, Lynda McLeod,
Michelle McMullan, Kateryna Merkalenko,
Toby Monk, Sarah O'Brien, Rosie O'Connor,
Samuel Pedder-Smith, Suzanne Pennings,
Christopher Petre, Louise Phelps,
Eugene Pooley, Sarah Rancans, Lisa Redpath,
David Rees, Alexandra Reid, Sarah Reynolds,
Meghan Russell, Sangeeta Sachidanatham,
Pat Savage, Catherine Scantlebury, Julie Schutz,
Hannah Schweiger, Angus Scott, Ben Slinger,
James Smith, Graham Smithson, Mark Stephen,
Annelies Stevens, Charlotte Stewart, Dean Stimpson,
Gemma Sudlow, Dominique Suiveng,
Nicola Swain, Keith Tabley, Iain Tarling,
Sarah Tennant, Timothy Triptree, Flora Turnbull,
Paul van den Biesen, Ben Van Rensburg, Lisa Varsani,
Shanthi Veigas, Julie Vial, Assunta Grafina von Moy,
Anastasia von Seibold, Zelig Walker, Tony Walshe,
Gillian Ward, Chris White, Rosanna Widen,
Ben Wiggins, Annette Wilson, Julian Wilson,
Elissa Wood, Charlotte Young



Catalogue photo credit:
Chris Denchy
© Christie, Manson & Woods Ltd. (2015)



INDEX

- A**
Acanthes, 17, 18
Alicante, 24, 51
Ambre, 100
Antilopes, 1
Aras, 20, 21, 25
Archers, 4, 7, 66
Armorique, 90
- B**
Bacchantes, 52, 64, 78
Biskra, 30, 31
Bluets, 95
Bouquets Marguerites, 46
Bresse, 93
- C**
Calypso, 110
Camargue, 79
Ceylan, 108
Chardons, 116
Charmes, 67
- D**
Danaïdes, 112
Davos, 89
Deux Figurines, 54
Douze Figurines avec Bouchon, 83
Druide, 88
- E**
Entrelacs, 56
Epicea, 114
Escargot, 74, 87
- F**
Faune, 85
Formose, 111, 118, 119, 120
- G**
Goblet Six Figurines, 113
Grand Dépôt, 55
Grande Libellule, 97
Grande Nue Socle Lierre, 82
Gros Poisson Algues, 58
Gros Scarabees, 27, 29
Groupe De Six Moineaux, 57
Guirlandes, 80
- H**
Hirondelle, 96
- I**
Inseparables, 104
- L**
La Belle Saison, 103
Lalique, R., 6, 8
Languedoc, 43
Lausanne, 68, 71
Le Baiser Du Faune, 102
Le Jade, 99
Le Mans, 94
Lezards et Bluets, 2
Lievres, 105
- M**
Malesherbes, 117
Marguerites, 92
Marisa, 3
Milan, 11, 12, 13
Misti, 98
Moineaux II, 69
- O**
Oran, 5, 47
- P**
Pan, 101
Penthievre, 45
Perruches, 9, 10, 14, 15, 16, 19, 22, 23, 49, 107
Pierrefonds, 33, 65
Poissons, 26, 37, 38, 39, 40, 41, 42
Prunes, 75
- Q**
Quatre Danseuses, 53
- R**
Rinceaux, 72
Roitelets, 84
Ronce, 59, 60, 61, 62, 106
- S**
Sauge, 76
Sauterelles, 32, 34, 50, 63
Serpent, 28, 48
Soliel, 73, 109
Sophora, 44, 115
Spirales, 86
- T**
Terpsichore, 81
Tortues, 35, 36
- V**
Verone, 70
Vichy, 77





CHRISTIE'S
THE ART PEOPLE

185 OLD BROMPTON ROAD LONDON SW7 3LD